

# Wilpshire Parish Council

Newsletter 2016



## QUESTION

Name all the locations where the Post Office has previously been sited in Wilpshire?

Answers to Leslie Lund, Clerk to the Council on Tel: 01254 248289. £10 prize for the first correct answer.

David Briffett



## WILPSHIRE PARISH COUNCIL NEWSLETTER

Welcome to the 2016 edition of the Wilpshire Parish Council Newsletter. Our Parish Council Newsletters seem to be appreciated by residents which is pleasing. We hope that you will find this edition useful and informative.

Our Newsletter is published annually and contains information about local organisations, public transport, useful contacts etc., as well as articles relating to the local area.

As ever, the breadth and accuracy of the information is only as good as that supplied to us by the groups and individuals concerned. We have invited as many organisations as we know of to submit information and have included all which has been submitted. Our thanks go to those who have responded.

Residents too have been invited to submit articles be they recollections of by-gone Wilpshire, poems, commentaries on modern Wilpshire, Wilpshire connections etc. So if you feel the urge to contribute to next year's edition then please send articles to our Parish Clerk, Mrs. Lesley Lund, 5 Hollowhead Close by the end of January 2017. Letters must contain an address.

Further information about the work of the Parish Council can be found on the Parish Noticeboard outside the Right At Home office (former Post Office) and on our website at: [www.wilpshireparishcouncil.org](http://www.wilpshireparishcouncil.org) The Parish Council is always interested to hear the views and suggestions of residents and has a fifteen minute public participation session before each meeting for this purpose or, if you prefer, you can write to the Parish Clerk. The Annual Meeting of Electors will be held on Wednesday, April 20th at 19.30 at Wilpshire Methodist Church Hall. You are invited to attend.

Finally, can we extend a warm welcome to new residents of Wilpshire Parish and hope that they enjoy living here in this pleasant part of Lancashire.

---

### **2015 QUIZ ANSWER**

Last year's Quiz question was: 'If you stand at the junction of Durham Rd and Whalley Rd what is the difference in height above sea level between this road junction and the junction of Whalley Rd with the Petre Roundabout?' The answer is: 217 feet (66.14m) hence the reason why there is often lying snow in Wilpshire but not in Langho after winter precipitation. No correct entries were received.

**PLEASE HELP THE ENVIRONMENT BY RECYLING THIS NEWSLETTER**

## Chairman's Message

Writing this Message provides an opportunity to reflect on the Parish Council's activities in the past twelve months and, indeed, it has been a busy one with a number of positive developments taking place.

Members decided to initiate a programme of improvement to the Durham Road Play Area and to the public footpath network both of which, if enhanced, should be of greater value to the local community. A new 'Timber Trail' is to be installed in the Play Area in February with the cost being met by the Parish Council and a grant from Ribble Valley Borough Council. We hope that the new equipment will be well used and well treated by our youngsters.

Wilpshire has a comprehensive network of public footpaths of differing types and uses. Some are urban in nature used as, for example, short cuts from housing areas to main roads, churches and bus stops whilst others lead out from the urban area to our local countryside and beyond. The surfaces and general state of these footpaths varies considerably. The Parish Council has carried out a complete survey of the public footpath network in Wilpshire and has drawn up an Improvement Plan to address the issues and problems found. Hopefully, this will eventually lead to some significant improvements to the network which in turn will make it more attractive to users and also increase usage. Work has already been undertaken on the Durham Road-Vicarage Lane footpath and more work will follow elsewhere in the Parish. Our own funds are being used as well as funding from Lancashire County Council under the Parish Paths' Partnership Scheme which we have joined.

The County Council made some welcome improvements to the surfaces of Ribchester Road and Hollowhead Lane – the latter after numerous requests from the Parish Council – though we continue to raise issues surrounding blocked drains and other highways' matters. The involvement of our Borough Councillors and County Councillor in also pursuing these issues is appreciated. It's not just councillors who can raise concerns or report problems. Local residents are often best placed to notice and I urge you to report them to the relevant authority whose contact details are listed elsewhere in this Newsletter.

The establishment of the monthly Lunch Club was a positive development during the past year and thanks go to Julie Foote (Right At Home), our churches and Beech's Butchers for this initiative which is of benefit to residents aged sixty plus. Hopefully, after reading the related article in the Newsletter, more residents will wish to attend what is a friendly and welcoming occasion.

The brief visit by The Tour of Britain Cycle Race was a highlight of last year and enjoyed by all who watched it pass through Wilpshire. The Parish Council entered into the spirit of the event by providing bunting, bikes (old yellow painted ones!) and banners, and refurbished the garden area at the traffic lights.

And, as I was completing this Message, I received an e-mail from County Councillor Alan Schofield to inform me that the bus service along Ribchester Road and Knowsley Road will not be withdrawn but will connect Blackburn, Ribchester, Longridge and Chipping on a two hourly timetable – so some more good news to end on and thanks to all who wrote to LCC to make their views known.

Rest assured that in the coming year the parish Council will continue, within its limited powers and resources, to try to do its best for the residents of Wilpshire and is always open to ideas, comments and suggestions. Remember that there is a fifteen minute session at the beginning of each meeting which any resident can attend to speak to council members. As ever, I should like to take this opportunity to thank my fellow councillors and Parish Clerk for their support, enthusiasm and commitment in enhancing and safeguarding the interests of Wilpshire residents.

## **Wilpshire Parish Council**

### **Clerk:**

Lesley Lund  
5 Hollowhead Close  
Wilpshire

Tel: 01254 248289

### **Members:**

Cllr C Ward (Chairman)  
19 Hollowhead Avenue  
Wilpshire

Cllr P Bradshaw  
4 Valley Road  
Wilpshire

Cllr D Briffett  
94 Whalley Road  
Wilpshire

Cllr James Foote  
45 The Hazels  
Wilpshire

Cllr T Gaffney  
16 Vicarage Lane,  
Wilpshire

Cllr Julie Foote  
Right At Home  
15 Whalley Rd  
Wilpshire

### **Borough Councillors:**

Cllr S Blbby  
34 Beaver Close,  
Wilpshire

Cllr S Hirst  
29 The Hazels  
Wilpshire

### **County Councillor:**

Cllr A Schofield

### **Parish Council Meetings 2016/17**

**March 9<sup>th</sup>, April 20<sup>th</sup> (Annual Meeting of Electors 2016), May 18<sup>th</sup> (AGM), June 29<sup>th</sup>,  
August 17<sup>th</sup>, October 5<sup>th</sup>, November 9<sup>th</sup>, December 14<sup>th</sup>**

**2017**

**January 18<sup>th</sup>, March 1<sup>st</sup>, April 19<sup>th</sup> (Annual Meeting of Electors). May 17<sup>th</sup> (AGM)**

## What Your Parish Council Did in 2015

### Your Parish Council.....

met on ten occasions

attended meetings with other local bodies to represent the area

maintained the Parish Council website

reported numerous problems on the local highway and public footpath networks to the relevant authority

joined the Parish paths Partnership to enable the Parish Council to be more proactive in improving the local footpath network

provided funding to carry out resurfacing work on FP16 from Durham Road towards Vicarage Lane

maintained the Durham Rd play Area and arranged the provision of additional play equipment using funding from RVBC

provided banners, bunting and yellow bicycles at Wilpshire traffic lights for the Tour of Britain Cycle Race

restored the garden area at the traffic lights

provided funding and a volunteer to maintain the floral planters at Ramsgreave & Wilpshire Station

provided a wreath on behalf of parishioners on Remembrance Sunday at Wilpshire Methodist Church

provided funding for our Parish Lengthsman

funded and produced the Parish Council Newsletter which is distributed to households in the Wilpshire Parish Council area

organised a Parish Walk

scrutinised local planning applications as received from RVBC and commented where appropriate

set a Precept of £15876.76 to cover its expenditure



After many requests from the Parish Council, Lancashire County Highways resurfaced the lower section of Hollowhead Lane near its junction with Whalley Road and also resurfaced all the sections with potholes towards Parsonage Road giving a much smoother and safer ride.

## Borough Councillors' Report

Last May (2015) saw the borough council elections for Ribble Valley held on the same day as the general election for the first time since the borough's formation in 1974 and saw Stuart and Sue returned to represent Wilpshire Ward for another four year term. Stuart was also re-elected as Leader of the Council by the ruling group and Sue moved up from vice chair to become the chair of the Planning Committee which is acknowledged to be one of the most demanding of the eight standing committees which conduct the council's business.

The first year of the new term has been predictably busy and challenging. Finance continues to be a major challenge as central grants reduce further, but Ribble Valley has retained its enviable reputation for sound finance as an excellent service provider with the lowest level of council tax in the county and one of the lowest in England. It will be Stuart's responsibility to lead the team of senior members and officers working to ensure that the borough continues to balance its budgets whilst preserving the high level of service provision.

The much acclaimed Tour of Britain was a resounding success for the whole borough last summer with an estimated £3 million boost to the local economy and a media coverage which was quite literally international. The route, of course, included Wilpshire, and local residents were as enthusiastic and the rest of the borough in the way they turned out in large numbers to cheer on the riders. No doubt we were all much relieved that the precarious 'dog leg' turn at the bottom of Hollowhead Lane by the Wilpshire Hotel proved to be well within the capabilities of all the riders!

In contrast to the sun and celebrations of the Tour of Britain, the borough was in the national focus over the Christmas holiday when the unprecedented rainfall resulted in the Boxing Day flooding which left many residents inundated throughout the borough with Whalley and Ribchester worst affected with over 250 properties flooded. Wilpshire was not directly hit but the very high rainfall has led to the re-occurrence of several problems of excessive run off in the ward, particularly in the Station Close and Durham Road areas, which Stuart and Sue are currently working to resolve in conjunction with the other agencies and authorities who share responsibilities in these cases. There is also a wider debriefing now under way looking towards long term prevention measures throughout the borough.

Mention was made in last year's report of the initial moves being taken by the Lancashire local authorities to work together in a 'combined authority' in areas of common concerns and particularly for economic development and job creation. The process has moved on significantly over the last 12 months and 13 out of the 14 Lancashire councils have now met and formally agreed to take discussion further. It is important to appreciate that this is specifically not another tier of government. In fact, on the contrary, it preserves the independence of all the boroughs but is a mechanism to work together in ways which will be more cost effective for mutual benefit. At the time of writing, the consultation process is now open and we would encourage all residents to find out more and have their say on the proposal. Details can be found on the Ribble Valley web site.

Of particular interest to older residents will be Sue's work as the Older Peoples Champion. As a long standing member of the Older Peoples Champions Network North West Sue understands the challenges of our over 50s population in Ribble Valley. In addition to actively campaigning for a minister for older people and lobbying against mass marketing fraud targeting older people.

Sue works with Dilys Day, Ribble Valley's partnership officer in looking after the over 50s in the borough. Much of the work involves promoting wellbeing and supporting our staying safe and warm initiatives for our older residents which includes grit supplies, path clearances, electric blankets and



warm homes packs. The Council have held several ageing well and affordable warmth events across Ribble Valley and secured additional grant funding for the expansion of lunch clubs in the borough providing meals and social forums, one of which is held at our own Wilpshire Methodist Church. Sue is a member of the Ribble Valley Seniors Forum which has hosted many interesting speakers with a wealth of knowledge of older people's issues including pensions, benefits, tax, highways, transport, armistice and many others.

Sue also supports Ribble Valley initiatives such as our stepping out walks, best foot forward and the fairly recent Bus Buddy scheme which has proved successful. Ribble Valley Borough Council has made ground-breaking progress in meeting the needs of our older residents, particularly embracing the ethos of the Older Peoples Champions Network in creating a dementia friendly borough, providing dementia advice seminars for the public and care professionals and training support for dementia friends. Sue also promotes the Village Halls Association and the Good Neighbours Project.

We would finally like to congratulate all members of the Parish Council in Wilpshire for once again producing an informative and interesting newsletter and for all the very important work they do throughout the year. Ribble Valley is lucky to have such a wide coverage of parish councils which do such good work at the grass roots and Wilshire is undoubtedly one of the most active, effective – and of course friendly. We look forward once again to working closely with our local parish council for the next 12 months to ensure that Wilpshire remains such a wonderful ward enjoyed and appreciated by all its residents.

Councillor Stuart A Hirst – Leader of Ribble Valley Borough Council

Councillor Sue Bibby – Chair of the Planning Committee and Older Peoples' Champion – Ribble Valley Borough Council



## USEFUL NUMBERS

### AGE UK

Ribble Valley Insurance and Information Office: 18A Castlegate, Clitheroe

Tel: 0300 300 1234

Information available on: Insurance, Benefits, Sheltered Accommodation, Home Care, Aids for Easier Living.

Office Hours: Mon-Fri 9.00 a.m.– 12.30 p.m. & 1.00 p.m. to 2.30 p.m.

### PRESCRIPTION COLLECTION & DELIVERY

An excellent service for the sick and housebound.

Brownhill Pharmacy, 782 Whalley New Road, Brownhill, Blackburn

Tel: 01254 249016

Langho Pharmacy, 1a East View Terrace, Whalley Road, Langho

Tel: 01254 247750

### NHS DIRECT

Tel: 0845 46 47 Advice on illness and emergency, and also on healthy living. 24hours a day, 7 days a week.

### POLICE

For non-urgent calls please telephone 01254 51212 and leave a message on the answerphone. TELEPHONE 999 ONLY IN AN EMERGENCY. The Neighbourhood Police Team for Wilpshire are PC 697 Lee Forshaw, PC 2833 Wendy Waterhouse & PCSO 7721 Jules Ragen who can be contacted on 01200 458766

E-mail: RibbleValley.NPT@lancashire.pnn.police.uk

### CRIMESTOPPERS

This charity enables anyone to pass on information anonymously about any crime or criminal activity. FREEPHONE 0800 555 111

### TRAVEL INFORMATION

National and local travel information may be obtained from Clitheroe Interchange, Railway View Road. Tel 01200 429832

CITIZENS' ADVICE BUREAU Admin Tel: 01200 427336

RIBBLE VALLEY BOROUGH COUNCIL Tel: 01200 425111 E-mail: [www.ribblevalley.gov.uk](http://www.ribblevalley.gov.uk)

## 'Report it-Lancashire County Council'

Online reporting facility:

Report a pothole, highway faults, broken streetlight, flooding on the highway, blocked drain, broken stile, blocked Public footpath etc.

Simply type in the postcode nearest to the fault, zoom in or out or move the map to the problem area. Then click/choose from the problem menu, click on the map at the location of the problem and briefly describe it on the drop down fault details facility and make a note of the reference number issued.

# HOMEWISE



REGISTERED SOCIETY UNDER CO-OPERATIVE & COMMUNITY  
BENEFIT SOCIETIES ACT 2014.  
NON PROFIT MAKING ORGANISATION ESTABLISHED IN 1987

## Services we provide:

- Home Repairs Support Service
  - Technical Support Service
  - Handypersons Scheme
  - Homecare Joinery Scheme
- Recommended Tradesmen's List
  - Security Scheme
- Independent Living – Steps towards the future
  - Warm N Well – advice on energy efficiency
  - Housing Options Service
  - Recycled disability aids
- Memory Matters Project – Support for those living with dementia and their carers

## All services now available throughout Ribble Valley

Hyndburn Homewise Society Ltd, 2-4 Whalley Road, Accrington BB5 1AA.  
Tel: 01254 232249 Email: [info@homewiseonline.co.uk](mailto:info@homewiseonline.co.uk)



Ribble Valley  
Borough Council

Lancashire  
County  
Council 

## Wiltshire Shops and Businesses

The following is a list of shops and businesses open to the public.

### Wiltshire Hotel

Along with cask ales and tapas, there is the opportunity to enjoy playing darts and snooker (small table) in the bar. There is also Sky Sports and BT Sport. Free WiFi is available.

David and Sharon Halstead host special events details of which are on their notice board. Small parties can be catered for.

Additionally, they provide outside catering for parties.

### *Opening Times*

Monday	3pm - 10.30pm
Tuesday	3pm - 11pm
Wed & Thurs.	3pm - 12.30am
Friday	2pm - 1am
Saturday	Noon - 1am
Sunday	Noon - 11pm

### Angella Readfern Hair Salon, 5 Ribchester Road BB1 9JH

In her unisex hair salon Angella offers a personal service in all aspects of hairstyling.

### *Opening Hours*

Monday	Closed
Tues	9.15am - 7pm
Wed & Thurs	9.15am - 8pm
Fri	9.15am - 7pm
Saturday	9am - 4pm
Sunday	Closed

Tel. 01254 248143

[www.angellareadfern.co.uk](http://www.angellareadfern.co.uk)

### Get Fresh Sandwich Bar 9 Whalley Road, BB1 9LQ

Sandwich bar featuring hot and cold food, cold drinks and barista coffee.

### *Opening Hours*

Monday – Friday	7am – 2pm
Saturday	8am - 2pm

Beech's Butchers, 11 Whalley Road, BB1 9LQ

Local butchers, distributors of meat, poultry and vegetables. A wide range of new dishes, ready meals and home-made pies is now available.

*Opening Hours*

Monday to Friday	7.30am - 6pm
Saturday	8am - 4.30pm
Sunday	10am - 5pm

Tel. 01254 246612

[www.beeches.co.uk](http://www.beeches.co.uk)

Right at Home, 15 Whalley Rd, BB1 9LQ (formerly Wilpshire Post Office)

Domiciliary care in the comfort of your own home.

All levels of support from personal care and assistance with day to day tasks, through to complex conditions and care needs. From as little as 1 hour to 24 hours 7 days a week

*Office Opening Hours*

Monday to Friday 9am - 5pm

Tel. 01254 658899 office hours 24/7 out of hours mobile: 07715446095

Email: [Julie.foote@rightathomeuk.com](mailto:Julie.foote@rightathomeuk.com)

[www.rightathomeeastlincs.com](http://www.rightathomeeastlincs.com)

Jeremy Makinson's Ribble Valley Studios, 23 Whalley Road BB1 9LQ

Family portrait photography, in the studio or on location.

Contact details for an appointment are:

Tel. 01254 248838

[www.ribbonvalleystudios.co.uk](http://www.ribbonvalleystudios.co.uk)

[www.jeremymakinson.com](http://www.jeremymakinson.com)

Post Office Services: The nearest counters are now at Swindlehurst's Newsagents, Whalley New Road and Spar, Portland Road, Langho.

## Public Transport Update 2016

The world of public transport is always changing and subject to the vagaries of government policy and funding at both national and local levels.

Whilst the local and regional rail network is set for significant improvement in the coming years, the local bus service is still subject to uncertainty of provision. Local bus services are provided on a commercial basis or contracted to run with a subsidy awarded by the county council as transport authority. In the Wiltshire area only the daytime service on the Blackburn to Clitheroe 22 route is profitable but with early morning and evening services having been given a subsidy. As this Newsletter goes to publication there is still much uncertainty as to the future of our local rural bus routes but at least we know that a new two hourly service 5B will connect Chipping with Blackburn via Longridge and Ribchester and run along Ribchester Road and Knowsley Road. It is possible that some of our other local routes will be saved in the coming weeks. Local bus services are lifelines for residents needing to reach shops, medical facilities, colleges etc. The whole issue of the strategic provision of rural bus services across the country needs addressing as routes are disappearing at an alarming rate and there is no longer a cohesive network in many areas.

For the local rail network 2015 was a year of progress despite the disruption and diversions caused by the rebuilding of Farnworth Tunnel and the redoubling of track either side of Darwen Station. These two improvements will, hopefully, lead to shorter and more reliable journeys. However, electrification works between Bolton and Manchester over the next two years will continue to affect our local service, especially on Sundays, so please check before travelling. Eventually, Blackburn will have a half hourly all day service to/from Manchester but not stations to Clitheroe which will keep the current timetable. The Todmorden Curve was opened last May giving an alternative route to Manchester from Blackburn and provides new travel opportunities. Our local station received real-time information screens which are very useful and was also given a repaint. New waiting shelters have also been installed on both platforms.

In December 2015 it was announced that from April this year our Northern services will be operated by a new franchisee – Arriva Trains North aka Deutsche Bahn (German State Railways). The announcement came with commitments to make many important improvements to our regional and local rail network in the next ten years including:

- removal and replacement of all the much disliked Pacer trains by 2019
- refurbishment of the other trains
- 281 new carriages
- new services including an upgraded Blackpool, Blackburn, Leeds, York service with new trains and branded as Northern Connect, part of a network of semi fast services across the North
- Blackburn Station booking office to be open from 06.00 until 22.00 each day
- an hourly Colne – Preston service on Sundays (currently two hourly)

Also announced last year was a desire by the northern local authorities to see the electrification of the rail route between Bolton and Clitheroe within the next ten years along with the route between Preston and Leeds via Blackburn. Such investment would really transform our local rail network but much depends upon government funding and political will. At least the northern authorities are beginning to work together to promote the strategic development of the rail network and the new regional bodies – Rail North and Transport for the North should have a positive effect in the coming years.

Meanwhile, a major obstacle to local rail travel which does need to be addressed are the poor connections at Blackburn between the Ribble Valley service and the services to/from Leeds and York and to/from Preston. Currently long waits are often needed at Blackburn - a situation which wouldn't be tolerated in Germany, Switzerland or the Netherlands.

## Local Bus & Rail Timetables

Timetables for Transdev buses are available from their website. Other bus timetables are available at Clitheroe Interchange or from Blackburn Tourist Information Centre now relocated to Blackburn Market. The website: [www.traveline.org.uk](http://www.traveline.org.uk) will enable you to plan a journey by public transport, including sections on foot, from Wilpshire to any destination in the UK

Rail timetables are available from manned stations and Clitheroe Interchange. Local line timetables are best downloaded from the Ribble Valley Rail website at [www.ribblevalleyrail.co.uk](http://www.ribblevalleyrail.co.uk) This website also gives details of actual train running from Ramsgreave & Wilpshire Station. So you can check before leaving home if your train is on time. Go to the website, click on 'Timetables' then on 'Train Running', then click on 'Northern' and find your relevant station and train departure. The website has lots of other useful information about the local rail network as does the website [www.communityrailancashire.co.uk](http://www.communityrailancashire.co.uk) Our local station also has Help Points so that you can call Northern or British Transport Police.

Travelling further afield to the rest of Europe by train is easier than you may think despite an annoying absence of through services from the north of England. As well as the excellent [www.seat61.com](http://www.seat61.com) website, which provides comprehensive information about connections from London St Pancras to most European countries, the website [www.Loco2.com](http://www.Loco2.com) will give you times and fares from Ramsgreave & Wilpshire Station to many other stations in Europe.

## Fare Bargains

Whilst fares rose an average of 1% local rail travel is still cheaper than the parallel bus service and season tickets offer major savings to regular users – roughly four days for the price of seven. Two people travelling together Off-Peak (after 09.00) should purchase a Duo Return which entitles one person to travel for half fare providing two people return together. These tickets are available to many destinations in Lancashire from R&W on Northern trains. Just ask the conductor. NB Restrictions apply to return journeys from Manchester in the evening rush hour and in December

There are numerous Day Ranger and Rover Tickets covering Lancashire and the rest of NW England. One of the best value tickets for those travelling across Gtr. Manchester and into parts of Derbyshire and Cheshire is the 'Wayfarer' – a ticket available for purchase at Clitheroe Interchange and other manned stations in Gtr Manchester and Lancashire. It is also possible to buy Wayfarer tickets at shops with a PayPoint facility or from conductors on trains. A Wayfarer is valid from Darwen and can be used on all **trains, buses and Metrolink** after 09.30 and all day at weekends across a wide area e.g. to Matlock (train to Buxton then bus), Edale and Grindleford (near Sheffield), Leek, Northwich and Macclesfield to name but some destinations. Pick up a leaflet and map from Clitheroe Interchange or Manchester Victoria giving full details. Wayfarers cost only £12 with those aged 60+ paying only £6! There is also a Group Ticket for two adults and up to two children. See the Ribble Valley Rail website section – 'Promotions' for further savings' deals.

For longer journeys it is always worth checking for savings by breaking up your journey into shorter sections e.g. travelling to the West Country it can be cheaper to book to Birmingham and then again from there to your destination. Travelling to London can be significantly cheaper travelling via Manchester Piccadilly.

Fancy a cheap trip by train to Edinburgh, Glasgow or Birmingham from Preston from £2 each way on named trains then search a few weeks in advance on the Megabus website but opt for the 'Train' option in 'mode of travel' section unless you want to travel by coach. Season tickets on local buses can be bought from the driver.

## DalesRail

The DalesRail train will run every Sunday from May 15th to September 11<sup>th</sup>. It calls at Ramsgreave & Wilpshire then continues via Clitheroe and the Settle-Carlisle Line to Carlisle calling at all stations en-route. From the train passengers can join guided walks of varying length from an easy stroll to a strenuous fell hike, take a town tour or wildflower ramble or a connecting bus to, for example, Wensleydale or down Swaledale, or simply do 'their own thing', or just enjoy one of the world's great railway journeys. For further details visit [www.dalesrail.com](http://www.dalesrail.com)



## Little Green Bus

Whilst the news on bus services is gloomy one chink of light are the services provided by The Little Green Bus – a professional door to door service for passengers who have difficulty accessing public transport. Below are details of the range of services provided by this not for profit company

### **SERVICES**

#### **Dial-a-ride Door To Door Bus Service**

This is a service that operates around the towns and villages within the Ribble Valley and surrounding areas.

Areas covered include, Clitheroe, Hurst Green, Longridge, Chipping, Whalley, Sabden, Read, Billington, Langho, Mellor.

#### **Volunteer Car Scheme**

We have a number of volunteer drivers, using their own cars, who provide an excellent personal service to undertake hospital and other medical appointments.

#### **Day Trips**

Throughout the year we organise a variety of day trips, shopping outings and lunch club visits.

#### **Group Transport**

Our minibuses are available for hire, by schools, colleges, community and volunteer organisations for day trips, evenings etc.

#### **Brokerage**

The Ribble Valley Transport Brokerage project is managed by Little Green Bus and enables the services of other local operators to be hired, as and when, contracts / demand requires.

#### **Youth / School Activities**

We currently provide transport for various youth groups and schools for a number of daytime and evening activities.

#### **MIDAS**

We are able to offer MIDAS (Minibus Driver Awareness Scheme) training. Please contact us if you would like more information about the scheme.

---

### **Little Green Bus**

Unit 3, Hawthorn Industrial Park, Upbrooks,  
Clitheroe, Lancashire BB7 1PL

**01200 444484**



## **Wilpshire Lunch Club**

Last Summer I was talking to Rev Gayle of Wilpshire Methodist Church and he happened to mention that he was keen for his church facilities to be put to use, asking if I had any ideas. As it happened I did, having thought for some time that it would be lovely to have a regular community get together that would be open for all to attend but which would be particularly helpful in drawing out the more lonely and isolated amongst us who may not have much opportunity to go out to a pleasant social occasion. We asked Rev Martin from St Peter's, Salesbury to join our project and the Wilpshire Lunch Club was born.

We were delighted by the numbers attending our inaugural lunch last October, with food sourced from Beech's Butchers, prepared and served by our willing volunteers. An excellent time was had by one and all.

After all, where else can you get a top quality meal – main course and dessert - followed by entertainment from talented locals whilst tea or coffee is served and all for the current paltry sum of £3.50!

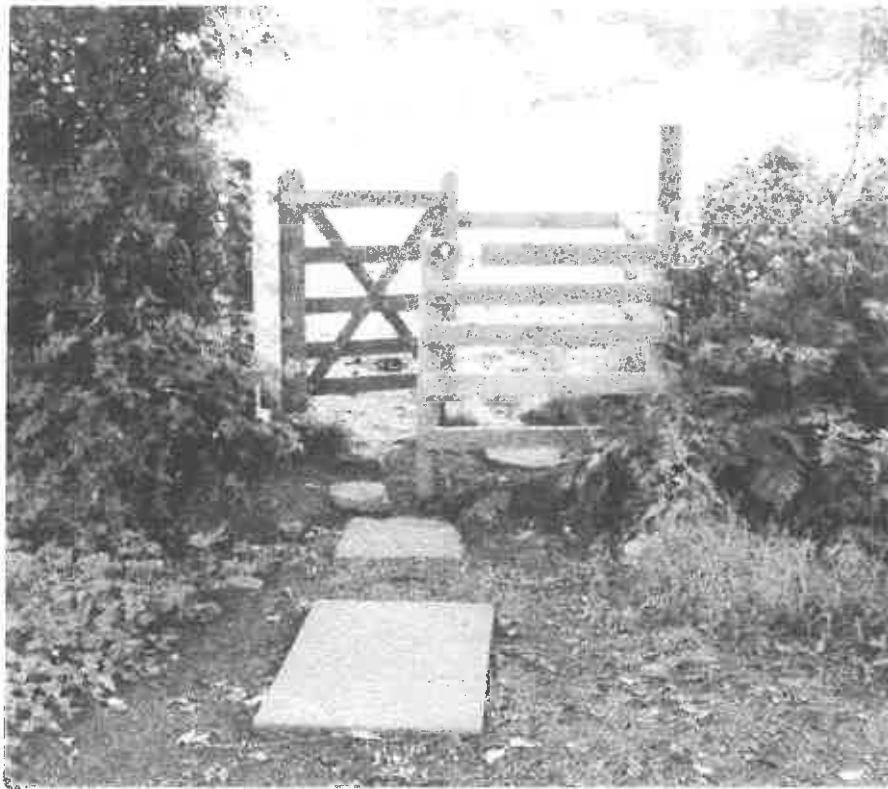
Wilpshire Lunch Club meets on the first Thursday each month at 12.30pm.

If you would like to attend, or you know anyone who would, please call Right at Home on 01254 658899 to book. Transport may be arranged if required.

Julie Foote  
Wilpshire Parish Councillor



# Wilpshire Public Footpath Improvements



Enjoying the use of local Public footpaths is an important amenity for many Wilpshire residents.

To this end the Parish Council endeavours to ensure that the paths remain usable in regard to surface condition and removal of intrusive foliage.

Within the last year Footpath 5 (leading from the bottom of Vicarage Lane heading north into the fields) had degenerated into a deplorable condition, and a request to Lancashire County Council (PROW-Public rights of way), very kindly resulted in the surface being restored, which has hugely improved the experience of users.

Further requests to LCC-PROW resulted in the provision and fitting of three 'Kiss gates' on the popular Durham Drive to Vicarage Lane path, (including one on Footpath 27).

The gates replaced worn out stiles where falls had occurred, resulting in this well used route becoming both safer and easier to access for residents.

LCC PROW cannot be expected to improve all of the Wilpshire Parish footpaths, so the Parish Council, after seeking approval from LCC PROW, decided itself to fund the improvement to the surface of Footpath 16 from Durham Drive, delivering approximately 50 Tons of stone onto the path by a best value, reputable contractor.



Footpath 16-the work in progress



**Footpath 16-after improvement**

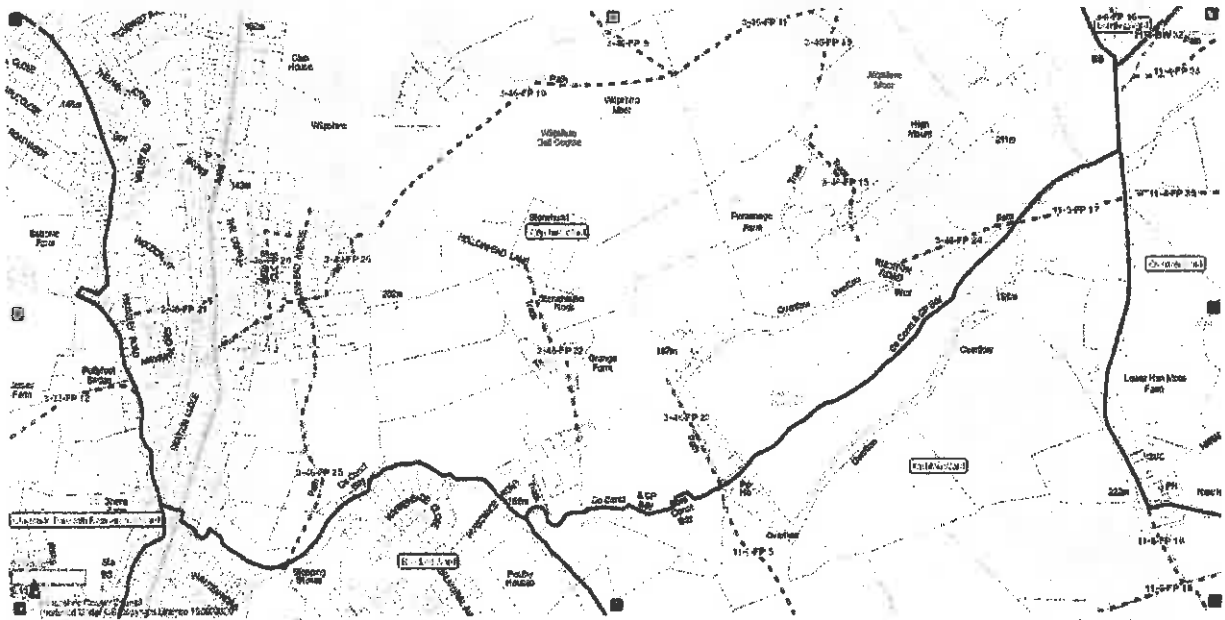
**Wilshire Parish Council hopes to continue to improve the surface of our Parish footpaths, as resources and Local Authority and landowner permissions allow.**



# The Wilpshire Boundary



This 'Rough guide' of the boundary line starts from the Wilpshire Parish Council meeting place at Wilpshire Methodist Church. The solid boundary lines on the following maps show where Wilpshire intersects with other Parishes and other Local Authorities.



So, from Wilpshire Methodist Church and then heading down Knowsley Road our boundary is in contact with Clayton le dale and Ramsgreave wards; shortly after we pass under the railway bridge it takes an abrupt turn east across Showley Brook at Blackburn and then generally follows the brook upstream past Warrenside Close in Blackburn, crossing over Parsonage Road and following Knotts Brook and then across the centre of Parsonage Reservoir; continuing to York Road, here touching Langho Ward and Hyndburn.



The above picture is at York Road-Wilpshire's heritage A666 boundary sign rehomed on the boundary line adjacent to a flat boundary stone in the foreground.

From this sign and passing to the west of Little Snodworth, the boundary follows the stream down to Carr Hall cutting through the fields to the A666 at the shared Wilpshire & Langho/Billington boundary stone as shown in the picture below.  
(Recently repainted by Wilpshire Parish Council)





## **Mario –(Maps and related Information Online)-LCC**

This is a Lancashire County Council online facility and contains a wealth of information.

The maps in the above article 'Rough guide' of Wilpshire's boundary were taken from 'Mario' and can be seen in more detail as required on the site. (Clicking on Ward boundary on the Local government information on the left-hand side menu and drilling/zooming down/moving map to the area of interest).

The maps can be overlaid with information such as Public Rights of Way, Ward and Council boundaries, Crime and Public safety, Highways and Transport, Aerial photographs and Historic maps.

---



*Salesbury Explorers Group*

*[www.segs.org.uk](http://www.segs.org.uk)*

*Salesbury walking group*

*-monthly walks of about 7 miles in the company of mostly local people.*

*Please follow the above link for the current walking programme*

*New programme of walks each September*

*All welcome!!*

## Wilpshire's Only War Memorial?

War memorials are a common feature in almost every British town and village reminding us of lives sacrificed in wars fought in the past century and 2014 witnessed commemorations to mark the centenary of the start of World War 1.

So what of Wilpshire's war memorial? Strangely, there isn't one or at least one for the whole community. Why is this? Do any readers know the reason? Was Wilpshire too small back in the 1920's to pay for the erection of a memorial, was the community divided about the need for one or weren't there any suitable locations to site one? Perhaps we shall never find out.

However, there are two war memorials in Wilpshire Methodist Church dedicated to the men from that church who died in each of the World Wars and below is a photograph of the WW1 memorial.



The memorial bears the following inscriptions:

*'To the Glory of God in Grateful Tribute to the fiftymen of this church who served in the Great War. And in Honoured Memory of those who laid down their lives'*

*'Greater Love hath no man than this, that a man lay down his life for his friends'*

The names of the dead are listed as;

Signaller Harry Levette	6 <sup>th</sup> battalion East Lancs Regiment
Lieutenant Henry H Mitchell	11 Battalion East Lancs regiment
Private Fred Nightingale	20 <sup>th</sup> Battalion Manchester Regiment
Gunner Norman S Horner	36 <sup>th</sup> Brigade Royal Field Arti
Sergeant Harry Ashton	11 <sup>th</sup> Battalion Scottish Rifles
Lance Corporal Frank R Eddleston	Australian Imperial Forces
Captain John A Dugdale	2 <sup>nd</sup> Battalion Norfolk Regiment

Could it be that the names of those men who died who were not members of Wilpshire Methodist Church be listed on the Salesbury Parish memorial as Wilpshire is in the ecclesiastical parish of Salesbury? And what of Roman Catholics?

Perhaps a reader who is interested, could try to solve the mystery or, more importantly, try to find out more about the men listed above so that we can include the information in next year's Parish Council Newsletter. Are there any relatives of the above men still living in Wilpshire? Please let us know.

---

## Parish Walk 2015

Twenty people joined last April's Parish Walk and followed a route through our local countryside via Wilpshire Glen, and Parsonage Road to reach the heights of Mickle Hey and Black Low before dropping down into Dean Clough and returning homewards via Wilpshire Moor. The sun shone and great views were to be had in all directions. We are lucky to have such pleasant countryside on our doorstep just waiting to be explored



Parish Walkers in Dean Clough

**This year's Parish Walk will take place on Sunday, April 17th**

YOU ARE INVITED TO JOIN  
**THE WILPSHIRE PARISH WALK**

**By Fieldpaths, Bridleways & Ginnels**

**SUNDAY, APRIL 17th 2016**

An easy five miles' walk

**MEET OUTSIDE WILPSHIRE METHODIST CHURCH AT 1.30 P.M.**

On our walk we will:

pass through Goosemuck Hillock  
take fieldpaths to Dinckley Grange and Anderton House  
use one of the parish's newly improved routes  
learn some more about the local area

All of this using the parish's local public footpath network

Come and meet some of your fellow residents and parish councillors

**WEAR BOOTS, WELLINGTONS OR STOUT SHOES – the route may be wet and muddy in places**

**BRING A WATERPROOF, DRINKS AND A SNACK.**

**N.B. unsuitable for pushchairs**

## Long Distance Walkers Wander Wilpshire Way



It wasn't just cyclists who put Wilpshire on the map. Maps were in constant use over two weekends in May last year when members of The Long Distance Walkers' Association held their Red Rose 100 Walk in Lancashire for the first time in over twenty years.

The May Day Bank Holiday Weekend was used by marshals to familiarise themselves with the route whilst the actual walk was held over the Spring Bank Holiday Weekend starting at Rivington on May 23rd. The walkers followed a route via Darwen Tower, Witton Park, Billinge Hill, Ramsgreave Hall, Wilpshire Bottoms, Hollowhead Lane and across the golf course and on to Dean Clough and Whalley. From there the participants headed for Pendle Hill, Downham, Bolton by Bowland, Tosside and Gisburn Forest arriving at Slaidburn for breakfast. After breakfast they climbed Longridge Fell, descended to Hurst Green and headed for Mellor Brook, Hoghton and Brinscall before finishing back at Rivington.

Most of the walkers came through Wilpshire in the middle of Saturday afternoon on a beautiful day with great views and showing off the Lancashire landscape at its best. Perhaps for those who came from other parts of the UK, and there were many of them, it proved it isn't always grim up North! Many participants were of mature years demonstrating that walking is definitely a life enhancer. Of the 550 people who took part around 360 completed the route in full after a very wet night. Those completing the route received certificates and probably headed for the nearest pub or for a hot bath and bed!



A group of walkers from the London area take a breather in Hollowhead Lane before crossing the golf course

## Tour of Britain Cycle Race Whizzes Through Wilpshire



The stage is set at Wilpshire Traffic Lights on Monday, September 7<sup>th</sup>

The morning of Monday, September 7<sup>th</sup> dawned sunny and warm and the air full of expectation and anticipation. Wilpshire was en fete with bunting, banners and yellow bicycles adorning the railings at the traffic lights courtesy of the Parish Council. The garden area had also received a makeover with new planting thanks to Chris Walton, our Parish Lengthsman and funding from the Parish Council.



Spectators gather at Wilpshire traffic lights

As the time of the race arrival approached the crowds were gathering along Hollowhead Lane, Ribchester Road and at the junction and a great atmosphere prevailed as friends, neighbours and strangers had an

# SALESBURY MEMORIAL HALL

## ACTIVITIES

		Main Hall	Upstairs
Healthy Lifestyle – Latin/Ballroom Dancing	Monday	10.15am	
Healthy Lifestyle – Sequence Dancing	Monday	11.30am	
Guitar	Monday		6.30pm
Metafit	Monday	6.30pm & 7pm	
Ladies Badminton	Tuesday	1.30pm	
Metafit	Tuesday	5.45pm	
Tai Chi	Tuesday	6.30pm	
Zumba	Wednesday	6.15pm	
Senior Badminton (18+)	Wednesday (except 4 <sup>th</sup> in month)	7.30pm	
St Peter's Salesbury Mothers' Union	4 <sup>th</sup> Wednesday in month	7.45pm	
Salesbury under 5's (mums and toddlers)	Thursday	9.30am	
Pilates	Thursday		6.00pm
Metafit	Thursday	6.30pm & 7pm	
Pat Eaket's School of Dance and Drama	Friday	4.00pm	
Ribble Creative Stitchers	3 <sup>rd</sup> Friday in month 3 <sup>rd</sup> Saturday in month	7.30am 10.30am	

## Tennis Club

ROOMS AVAILABLE FOR HIRE

**All enquiries: Mrs B Craven**

**Tel: 01254 249425**



## SALESBURY MEMORIAL HALL TENNIS COURTS

There are currently two hard surface tennis courts situated behind the Memorial Hall in Salesbury, which are run by the Hall's committee and currently paid for by an annual membership fee.

The tennis courts currently need resurfacing and the committee now has to make the decision whether the high cost of the work can be justified, considering the falling number of members.

We would like to think that there are families with children in our village who are interested in tennis who would like to continue to have local courts available to them.

Consequently if your family wants to see the tennis courts retained and improved, we would be grateful if you could complete the slip below and return to: Marguerite Webb, 1 Vicarage Lane, Wilpshire BB1 9HX, or alternatively copy & paste and email to: [margueritewebb1@gmail.com](mailto:margueritewebb1@gmail.com) by 6<sup>th</sup> November 15.

***IF NO INTEREST IS SHOWN BY THE COMMUNITY THE COMMITTEE WILL HAVE NO OTHER OPTION THAN TO CLOSE THE TENNIS COURTS, WHICH WE BELIEVE WILL BE A GREAT LOSS TO THE AREA.***

Name \_\_\_\_\_

Telephone \_\_\_\_\_

Email \_\_\_\_\_

Are you/your family interested in using the tennis courts ? YES/NO

Would you be interested in playing casually or prefer a more formal club with tournaments ? CASUAL/CLUB

*The annual membership fees are currently: Juniors £22, Seniors £30 & Families £60*

Would you be happy to pay the above fees ? YES/NO

Any Comments ? \_\_\_\_\_

\_\_\_\_\_

## **Wilpshire Golf Club**

Last year Wilpshire Golf Club celebrated 125 years of golf with a Festival of Golf held in August. The week long event drew golfers from a wide area and was not only a financial success but also introduced newcomers to our facilities. This year we will do something similar and we have no doubt, weather permitting, that we can build on last year's success.

This year our attention is focused much closer to home and a wish to attract the residents of Wilpshire to use the club for sporting and recreational purposes.

On the sporting front we have the status of a Community Amateur Sporting Club (CASC) which, amongst other things, means that we actively promote golf in the area. We understand that golf has some barriers either real or perceived, one of which is cost. To address this we have a small number of memberships available for local residents who are on low income. Anyone interested in exploring possibilities in this area could contact the Club Secretary to find out more in complete confidence. In addition we have vacancies in most membership categories and particular welcome ladies, juniors and those who wish only to play mid week golf.

On the recreational side we offer Social Membership which allows the use of the club facilities and discounted bar prices. Despite the rather austere outer facade the inside of the club and its members are refreshingly welcoming. The recently refurbished lounge has over the past 12 months gained an excellent reputation for hosting events such as christenings, birthdays and wedding receptions. Our chef is not only great at pies but can also turn his hand to cordon bleu catering and has a very open mind to help those celebrating do so without worry. Any enquiries would be gratefully received by the office of directly via David our Head Chef.

Contact Wilpshire Golf Club:

Email: [admin@wilpshiregolfclub.co.uk](mailto:admin@wilpshiregolfclub.co.uk)

Tel: 01254 248260



# SALESBURY CRICKET CLUB

Salesbury CC was founded in 1906 and first played in the Blackburn Sunday School League. Today we run three senior teams in The Houldsworth Ribblesdale Cricket League and have a thriving junior section. Mixed boys and girls teams at age groups U9, U11, U13, and U15 play in the Lancashire Colts League whilst an U12 girls team has been entered in the inaugural Lancashire Girls' Club Junior League this year.

## **Junior Cricket**

Salesbury have been credited with ECB Clubmark Status, showing that we reach the highest standards of junior infrastructure and child safety and that our coaches are qualified to at least ECB Coaches Association Level 2.

This status helps us to support a vibrant junior section with boys and girls aged 8 years and over attending our Friday night coaching sessions at the club throughout the summer months as well as indoor training in the winter. (See Winter Training Sessions below).

Friday nights at the club are social as well as coaching events with mums and dads able to keep their eyes on the development of their young Joe Root or Kate Cross whilst enjoying a sociable evening with other cricketing parents.

St. Peter's 2016 Rose Queen, Kitty Davies, is a keen cricketer and member of the Salesbury Scarlets, our girls section. This is what Kitty says about cricket at Salesbury:

"I am really lucky that Salesbury Cricket Club has a girls section, it is a great team and I have been playing there for 2 seasons. We work hard, try hard, and train hard and we believe anything is possible. Last Season we played a few games against other local girls teams and at the end of the season we had our most competitive game yet, which was a Mums versus Daughters match! At Salesbury Cricket Club, with the help of our great coaches, we are improving our fitness, learning new skills and having lots of fun."

## **From junior to senior cricket**

We are a club who prides itself in developing players and bringing them through to play in the senior teams. Typical is Peter Richardson who has been playing at the club since he was 8 years old and this year has become our 2<sup>nd</sup> Team Captain. This is what Peter says about cricket at Salesbury:

"Salesbury has given me lots of opportunities. I have been able to meet many different people, broaden my outlook and to have a great time socially, whilst playing a sport I enjoy."

## **Senior cricket**

The 2015 season will be remembered as being a reasonably successful but "nearly" season for Salesbury Cricket Club.

The 1<sup>st</sup> Team were again pushing for promotion but just lost out in the last matches of the season. This was repeated with the 2<sup>nd</sup> Team who won the Lawrenson Cup and could have turned a very good season into a superb season but couldn't find a win in their last 3 league matches, having to settle for third in the league. The young 3<sup>rd</sup> Team continued their development, playing some excellent cricket at times and finishing in mid-table.

The 2015 season was the last for our talented professional from Sri Lanka, Susantha Pradeep, who again scored over 1000 runs including 139 not out against the ultimate champions, Clitheroe. We wish him well for the future.

Our new professional is Neil Hornbuckle. He is 24 years old and plays first class cricket for South Western Districts in South Africa. Neil is a top order batsman who bowls off spin. Early in January he completed his second first class century of the season. He is excited by the challenge at SCC for the 2016 campaign and is also committed to helping in the development of our junior players.

### **Winter training sessions**

Indoor training and nets have been arranged during February and March for both the juniors and seniors:

- Sessions for the Salesbury Scarlets and the Under 9s will take place at St. Bedes School on Sundays from 3:00 – 4:30 p.m, the Scarlets starting on 7<sup>th</sup> Feb, the Under 9s on 16<sup>th</sup> Feb.
- The u11s and u13s sessions will start in March, dates and times still to be confirmed but provisionally on Saturdays at QEGS, Blackburn from 6:00 – 7:00 pm.
- The Seniors and Under 15 nets will start at Blackburn College on Fri 26th Feb, 7.30 - 9pm.

### **Events in the coming season**

The 2016 season begins on Saturday 16th April for our 1st and 2<sup>nd</sup> teams whilst the 3<sup>rd</sup> XI start their campaign on the following day, Sunday 17th April.

Before then a group of dedicated volunteers (please feel free to come down and help – many hands make light work!) will be awakening the ground and buildings from their winter slumbers and getting them ready for the season during the "Cricket Force" week-end Friday – Sunday, April 1<sup>st</sup> to 3<sup>rd</sup>. Sounds a bit like hard work but it's sociable and there's always a good bit of fun involved.

As usual we are arranging several events and social functions for the community.

The first of these will be our now annual Golf Day at Wilpshire Golf Club on Friday 15th April. This is a seriously fun event for all abilities of golfer. It's a Texas Scramble with a shotgun start at 1:00 pm. Entry is just £175 per team with a meal and prize presentation in the club house from 5:30. If you wish to enter a team please contact Jason Rawson at the Club. Of course, you don't have to play if you don't want to – simply have a walk round the course and help - out or even sponsor a hole for £30.

The hugely popular and well attended "friendly"(?) fund raising match between St. Peter's Church and the Club is again planned to be held on the ground this coming summer. This is not only of great benefit to both the Church and the Club but is also one of the village's social events of the year.

### **Membership**

We welcome any new members, both playing and non-playing, who are keen to join an ambitious, progressive but family orientated cricket club. In addition to individual playing and social membership, family membership is also available covering both juniors and their parents. For further details please contact Dave Gibson (Membership Secretary) by e-mail at: [davegibson1@live.co.uk](mailto:davegibson1@live.co.uk)



Salesbury Church of England Primary School is a large primary school serving the local area. We are proud of our distinctive Christian ethos and its close links with St. Peter's Church, Salesbury.

Children start their journey with us from the age of three where they can attend our nursery school each day. The nursery gives children a taste of school life and eases the transition into school life. They have their own outdoor area which is adjacent to the school playground and has the most amazing views of the surrounding areas.

Our nursery children love a challenge! One day, a very sad Noddy appeared at the door in his car. He wanted to give his friend, Big Ears, a lift to hospital but couldn't fit him in his car. Our children rose to the challenge immediately, suggesting all kinds of wonderful ideas until they settled on creating a trailer for Noddy. Using their science and technology skills, they created their trailers using magnetic materials to join. It was amazing to see them suggest ideas, try out materials, concentrate and work as a team, not leaving the job until their mission was complete.

On another occasion, they had to save some people who were stranded on a desert island. Answering to the distress signal, they set to work to create boats for the people. It was lucky that they had been learning about floating and sinking all week as that really helped them choose the right materials.

I was equally amazed to watch our reception children carefully study aerial photographs of the local areas and local maps. They were fascinated and quickly spotted familiar features. They then went on a walk around the school grounds, trying to remember as many key features as they could. Children made journey sticks to help them remember, tying different colours of ribbon and string to represent key features. The children then used this as an aide memoire back in the classroom to create their own plans of the school.

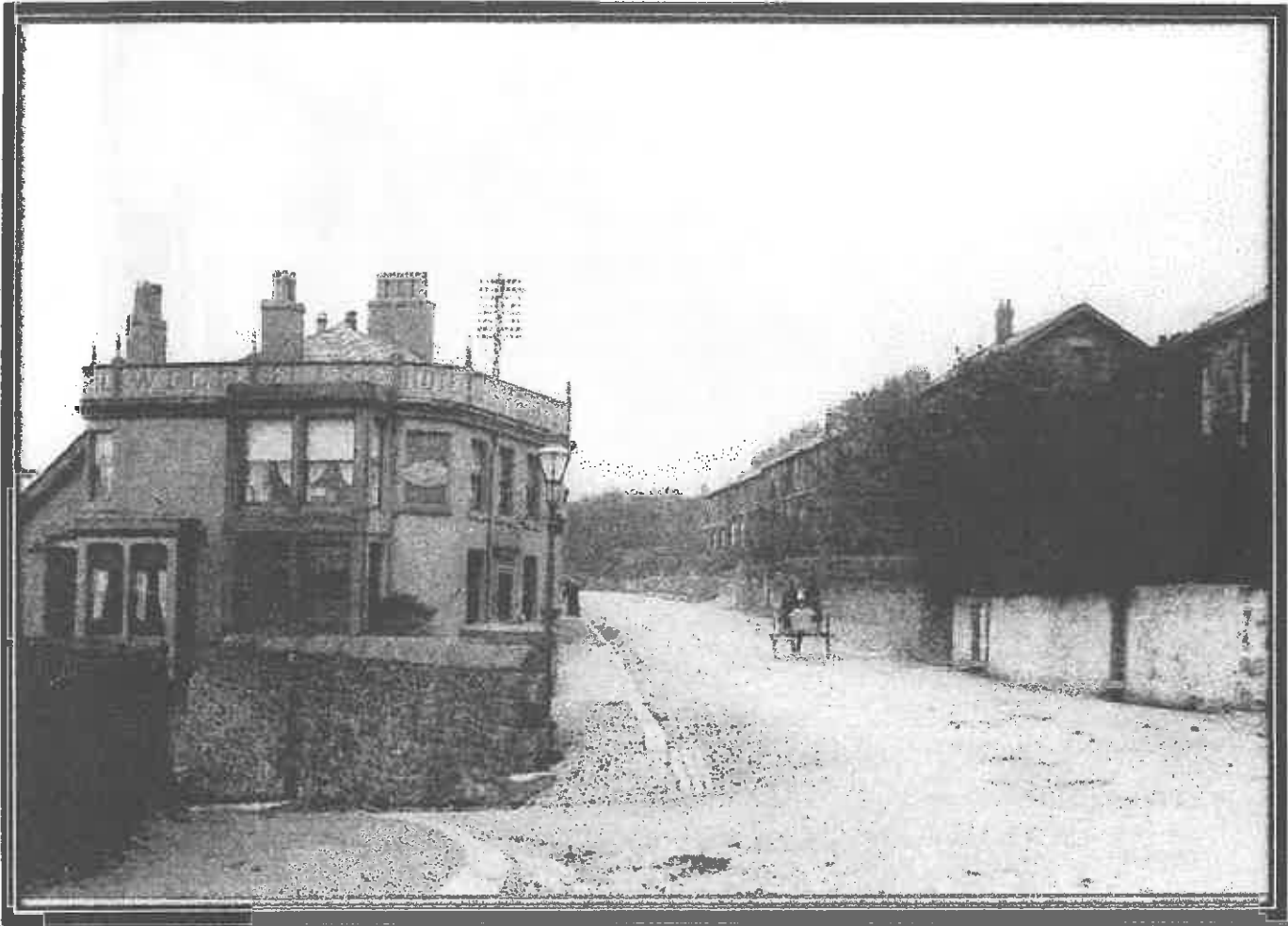
Our infant children received a film message from the elf in the woods, they watched him reveal some very old toys in the trunk and were so intrigued. They then spent several weeks discovering toys from the past, even trying out old computer games amazed at their simplicity (and making the staff feel extremely old!) They absolutely loved their Victorian Playtime, delighting in hoops, marbles, hopscotch and spinning tops which just goes to show how children still enjoy the most simple types of play.

Junior children started the Spring Term with a Scooter Rally; having great fun on the school playground exploring the best surfaces they could find. This hooked the children into learning all about friction, forces and gravity which gave them the skills and knowledge to make their own model cars, cams, models and marble runs.

We are now looking forward to the remainder of the Spring and Summer Term. Our calendar is already brimming with lots of exciting events. The children will be developing their skills in geography next, so watch out for them in Salesbury as they follow their own maps and routes and see what they can discover about their community.

Clare Berryman, Headteacher

## Wilpshire Past & Present



This photograph of the junction of Ribchester Road and Whalley Road was probably taken in the early years of the twentieth century. So much looks familiar but, as with many old photographs, much interesting historical evidence can be gleaned from closer inspection. The first noticeable difference between then and now is the lack of traffic indeed the pony and trap are travelling on the wrong side of the road, not that this mattered in an age when speed was determined by the horse – cars must have been very rare indeed. The predominance of 'horsepower' is evidenced by the numerous patches of horse droppings on the road surface and its removal was a constant job though the local vegetable patches would no doubt have benefited! The road surface was 'Macadamised' a hard surface of fine compacted gravel, dusty in summer and tacky in wet weather – tarmacadam was probably applied in the 1930's or 1940's. Gas lighting was the order of the day – one light at the junction sufficed, supplied by town gas from Blackburn, but the lamps of Wilpshire were maintained by the Parish Council – the reason for its formation. It's hard to imagine how dark it must have been in the evening as most homes would be lit by gas or oil lamps. The gas lamp was replaced by one large electric lamp of five hundred candlepower in the 1930's when electricity reached the area.

The obvious difference back then was the layout of the junction – a much narrower Ribchester Road comes up from the railway at an angle to Whalley Road but with a much wider pavement to the left and a stone retaining wall where the present garden is laid out. Changes to the junction probably took place in the 1930's as motor traffic increased. Prior to the building of Whalley (New) Road as a turnpike in 1818 there wasn't a junction at this location and Hollowhead Lane would have gone straight across. The main road to Ribchester was that through Wilpshire Bottoms. Note also the cobbled pavement on the opposite corner – true cobbles i.e. pebbles not stone setts. A large telegraph pole looms above the Wilpshire Hotel a relatively recent addition to the streetscene at this time and with a line stretching across to the post office which was on the corner of Hollowhead Lane. Telegraph poles with their white insulation pots remained a common sight along roads and railways into the 1970's.



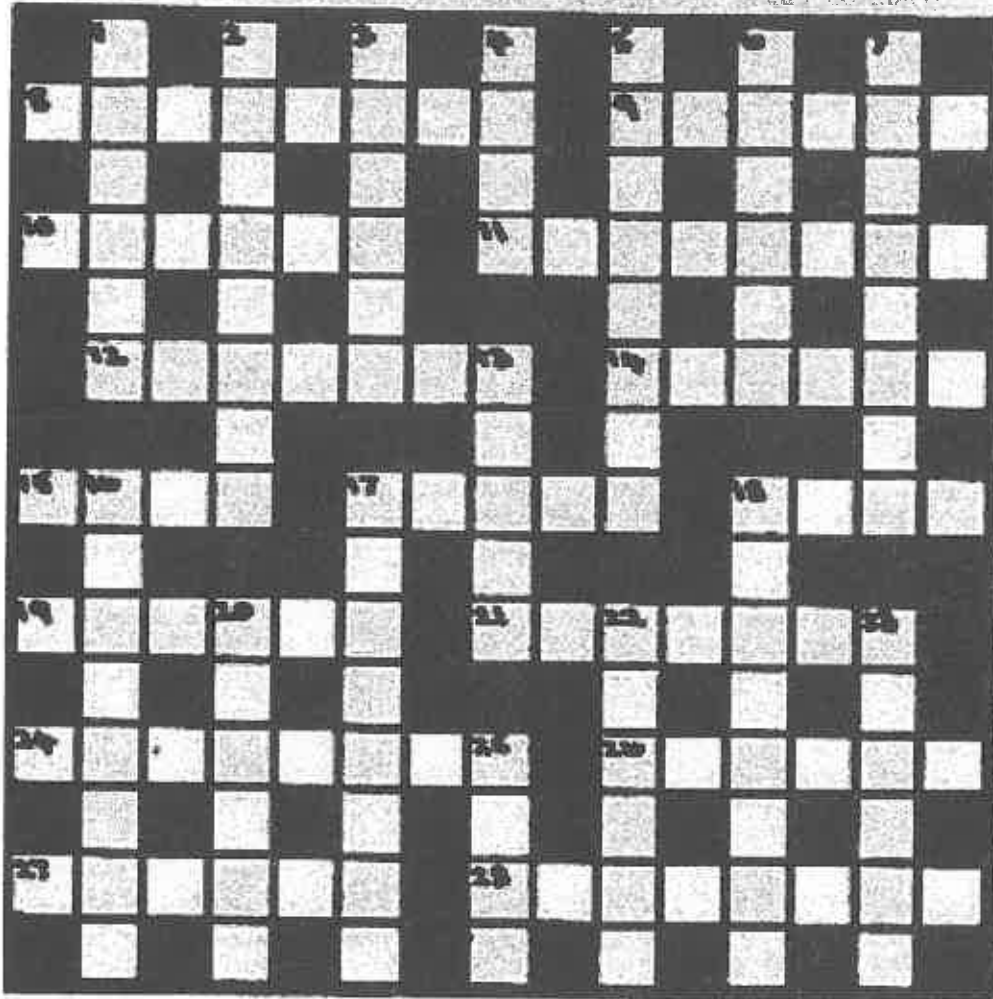
So what's changed in the past 100 years or more? Many changes are obvious namely motor traffic – lots of it, a great increase in street furniture – electric street lighting, road signs, traffic lights, tarmac road surface, road markings, bus shelter and metal barriers to name but some. The large building beyond the first terrace has gone to be replaced with the housing association apartments and large trees have grown. The Wilpshire Hotel looks much the same apart from a paint makeover and the removal of the intrusive rooftop signage, and the many chimney pots reflecting the changes in domestic heating. Probably the greatest changes are unseen namely the revolution in internal domestic comforts and the associated advances in technology which have greatly affected our lives. It's hard to imagine what changes a photograph taken here in another 100 years will capture? Perhaps readers would like to write in with a futuristic description of that view?



## A Lancashire Crossword Competition

The crossword below has many clues relating to the County Palatine of Lancaster which is within the pre 1974 boundaries. Completed crosswords should be sent to the Parish Clerk by Friday, July 1<sup>st</sup>. Please attach your name, address and telephone number to your entry.

A prize of £10 voucher will be given to the first correct entry drawn out after the closing date



### CLUES ACROSS

8. Southport park where the annual flower show is held. (8)
9. An industrial town at the mouth of the River Mersey. (6)
10. A kind of hot spice. (6)
11. A small community in the Ribchester area. (8)
12. Clothes horses — in Lancashire parlance. (7)
14. A lawsuit. (6)
15. An eyesore. (4)
17. Contaminate. (5)
18. Playthings. (4)
19. Obtain a loan. (6)
21. Architect of Liverpool's Roman Catholic Cathedral. (7)
24. A rush of panic stricken livestock. (8)
- 26 and 20 Down. The 18th century painter who was born at Beckside near Dalton-in-Furness. (6, 6)
27. Sea one you get at St. Annes. (6)
28. Navigable passages — out of Liverpool harbour perhaps. (3, 5)

### CLUES DOWN

1. A small stone village south of Pendle. (6)
2. A Fyde moor and hamlet on the River Wyre. (8)
3. Highly commend. (6)
4. The old mining village of Skelmersdale was above the valley of this river. (4)
5. In plentiful supply. (8)
6. The train which ran at the opening of the Manchester railway. (6)
7. A symbolic tale. (8)
13. Support for a broken arm. (5)
16. A Lancashire food obtained from pigs. (8)
17. Hall near Burnley, one of Lancashire's most historic houses. (8)
18. A word coined by Dicky Turner of Preston. (8)
20. See 26 Across.
22. A village on Walney Island. (6)
23. It can be awarded by a University, such as Manchester. (6)
25. Haslingden is in this area of Lancashire. (4)

