

# Wilpshire Parish Council

## Newsletter 2018



**23 Whalley Road, Wilpshire, Blackburn, Lancashire, BB1 9LQ.**

This business property is currently used as the House/Office for a well known Photographer.

### QUESTION

- 1) What type of business operated from these premises 25 years ago?
- 2) What was the trade name by which the shop was known?

### ANSWERS

To Lesley Lund, Clerk to the Council.

One Prize Winner of £10 for the correct answer if selected.

David Briffett BSc Honsw MRICS  
Parish Councillor



# WILPSHIRE PARISH COUNCIL NEWSLETTER

Welcome to the 2018 edition of the Wilpshire Parish Council Newsletter. Our Parish Council Newsletters seem to be appreciated by residents which is pleasing. We hope that you will find this edition useful and informative.

Our Newsletter is published annually and contains information about local organisations, public transport, useful contacts etc., as well as articles relating to the local area.

As ever, the breadth and accuracy of the information is only as good as that supplied to us by the groups and individuals concerned. We have invited as many organisations as we know of to submit information and have included all which has been submitted. Our thanks go to those who have responded.

Residents too have been invited to submit articles be they recollections of by-gone Wilpshire, poems, commentaries on modern Wilpshire, Wilpshire connections etc. So please contribute to next year's edition and send articles to our Parish Clerk, Mrs. Lesley Lund, 5 Hollowhead Close by the end of January 2019. Letters must contain an address. Has anybody got any old photographs of Wilpshire – views, events etc. – we would like to publish them.

Further information about the work of the Parish Council can be found on the Parish Council Noticeboard outside the Right At Home office (former Post Office) and on our website at: [www.wilpshireparishcouncil.org.uk](http://www.wilpshireparishcouncil.org.uk) The Parish Council is always interested to hear the views and suggestions of residents and has a fifteen minute public participation session before each meeting for this purpose or, if you prefer, you can write to the Parish Clerk. The Annual Meeting of Electors will be held on Wednesday, April 18th at 19.30 at Wilpshire Methodist Church Hall. You are invited to attend.

Finally, can we extend a warm welcome to new residents of Wilpshire Parish and hope that they enjoy living here in this pleasant part of Lancashire.

---

## **2017 QUIZ ANSWER**

The original Wilpshire Station closed to passengers in September 1962 when the service to Clitheroe and Hellifield ceased. This was a pre-Beeching Report closure. Interestingly, the actual line from Blackburn to Hellifield remained open to passenger trains. This fact that was overlooked when British Rail published the first Closure Notice for the Settle-Carlisle Line and led to them having to start again and produce another Closure Notice.

The new station, renamed Ramsgreave & Wilpshire was opened in May 1994 when services to Clitheroe were reinstated.

The winner of the competition was Mr. Roscoe of Knowsley Road.

## **2017 CROSSWORD COMPETITION**

Three correct entries were received and the overall winner pulled from the hat was Mr Graham Slater of Hollowhead Avenue. Answers to the 2017 Crossword can be obtained from the Parish Clerk

## Chairman's Message

Another busy year for your Parish Council which has continued to try to improve and enhance our local community within its limited budget.

Much expenditure in the past year has gone to the Durham Road Play Area with an extension to the existing adventure trail, new signage, repainting of play equipment and tree maintenance. New goalposts will be installed in the spring.

Maintenance of our public footpath network has continued with a grant from Lancashire County Council and the coming year will see further work carried out to improve the surfaces of more footpaths as part of a planned programme using Parish Council funds. Inside this newsletter is the first of a series of 'Walking Wilpshire' walks to encourage local residents to use the parish's network of rights of way. More will be published on our website in the coming year and in future editions of our newsletter. Wilpshire has a varied and often scenic network of routes which is worth exploring and I was pleased to lead a well-supported 'Parish Council Walk' in May last year.

Last Christmas the Parish Council instigated another initiative to enhance the area. With funding from the Parish Council, local shops and a grant from Ribble Valley Borough Council we were able to arrange the provision of Christmas trees, lights and brackets to the exterior of each local shop and pub to add a bit of Christmas atmosphere to the local scene. Hopefully, with lessons learnt, we intend to repeat this initiative in 2018.

Mention of trees reminds me that parish councillors have been carrying out a tree survey of Wilpshire to identify specimens which might be worthy of Tree Preservation Orders and to send details to the Borough's Countryside Officer for his consideration. One of Wilpshire's assets is its variety of mature trees which enhance its streetscape.

Whilst it is pleasing to report on positive developments I am also mindful of less pleasant issues. The past year witnessed an increase in thefts from vehicles, usually at night. The local community reacted by being vigilant and taking steps to catch the criminals and had significant success. However, it is worth reminding residents to ensure cars are locked at all times and contents removed.

Speeding on Whalley Road is a problem raised by residents and the Parish Council is working with County Councillor Alan Schofield and other agencies to try to introduce measures to address this. Flyposting at Wilpshire traffic lights is a constant irritant and we have been taking action to tackle this illegal activity. Chris Walton, our Parish Lengthsman, works hard to keep the parish tidy and I thank him, once again, for his efforts.

The Parish Council welcomed a new member, Martin Williams, last year and I hope he enjoys his time with us. I take this opportunity to thank my fellow parish councillors for their continued diligence, vigilance and proactive interest ably supported by Lesley Lund, our clerk. The Parish Council works hard to try to get things done for the benefit of Wilpshire and its workload is increasing.

As ever, I ask that all residents be vigilant, to report issues which are of concern to the relevant authority. Don't leave it to others. The Parish Council's public sessions at the beginning of its meetings are available to any resident to express concerns, raise issues or to seek advice and guidance. The Parish Council welcomes ideas and suggestions to improve our local area.

Craig Ward

## Wilpshire Parish Council

### **Clerk:**

Lesley Lund  
5 Hollowhead Close  
Wilpshire  
Contact: wilpshireparishcouncil@gmail.com

### **Members:**

Cllr C Ward (Chair)  
19 Hollowhead Avenue  
Wilpshire  
Tel: 01254 240526

Cllr J Bremner (Vice Chair)  
90 Whalley Rd  
Wilpshire  
Tel: 01254 248045

Cllr A Gaffney  
16 Vicarage Lane  
Wilpshire  
Tel: 01254 246462

Cllr A Lund  
12 Railway View  
Billington

Cllr M Williams  
Holly Bank  
8 Whalley Rd  
Wilpshire  
Tel: 07973 163204

Cllr D Briffett  
94 Whalley Rd  
Wilpshire  
Tel: 01254 240499

Cllr James Foote  
45 The Hazels  
Wilpshire  
Tel: 01254 246343

Cllr Julie Foote  
Right At Home  
15 Whalley Rd  
Wilpshire  
Tel: 07940 326803

### **Borough Councillors:**

Cllr S Bibby  
34 Beaver Close,  
Wilpshire

Cllr S Hirst  
29 The Hazels  
Wilpshire

### **County Councillor:**

Cllr A Schofield  
Tel: 07876 844262

### **Parish Council Meetings 2018-2019**

March 28<sup>th</sup>, April 18<sup>th</sup> (Annual Meeting of Electors), May 23<sup>rd</sup> (AGM), June 27<sup>th</sup>, August 1<sup>st</sup>,  
September 19<sup>th</sup>, October 31<sup>st</sup>, December 5<sup>th</sup>, 2019 January 16<sup>th</sup>, February 20<sup>th</sup>, March 20<sup>th</sup>,  
April 17<sup>th</sup> (Annual Meeting of Electors), May 22<sup>nd</sup> (AGM)

## What is a Parish Council?

Parish Councils in England are the first tier of local government and are responsible for areas known as civil parishes i.e. **not connected with a church parish**. They can deliver a wide range of services at local level depending upon the type of locality and budget. As first tier councils they try to respond to the needs of the communities they represent – delivering the services or representation they most need. Parish Councils are statutory bodies and members are elected for a term of four years. They are funded by an annual precept which is added to Council Tax. They do not receive funding from central government.

## What Your Parish Council Did in 2017

### Your Parish Council.....

- met on ten occasions
- attended meetings with other local bodies to represent the area
- maintained the Parish Council website
- reported numerous problems on the local highway and public footpath networks to the relevant authority and worked with our L.C.C. Councillor to address speeding issues on Whalley Road
- joined the LCC Parish Paths' Partnership to enable the Parish Council to be more proactive in improving and maintaining the local footpath network. Used L.C.C. grant for path maintenance
- funded a new 'Wilpshire' boundary sign at Parsonage Reservoir with a 50% grant from L.C.C.
- provided funding for additional adventure play equipment at Durham Road Play Area and maintained the Play Area
- organised a joint initiative with local shopkeepers to provide illuminated Christmas trees outside their premises. Funding came from the Parish Council, shopkeepers and a grant from RVBC
- carried out a tree survey to identify trees to be considered for Preservation Orders by the Borough Council's Countryside Officer
- maintained the garden area at the traffic lights
- provided funding and a volunteer to maintain the floral planters at Ramsgreave & Wilpshire Station
- provided a wreath on behalf of residents on Remembrance Sunday at Wilpshire Methodist Church
- provided funding for our Parish Lengthsman who maintains the tidiness of the Wilpshire Parish area
- funded and produced the Parish Council Newsletter which is distributed to all households in the Wilpshire Parish Council area
- organised a Parish Walk
- scrutinised local planning applications as received from RVBC and commented where appropriate
- set a Precept of £16 547 to cover its expenditure

## USEFUL NUMBERS

### AGE UK

Ribble Valley Insurance and Information Office: 18A Castlegate, Clitheroe

Tel: 0300 300 1234

Information available on; Insurance, Benefits, Sheltered Accommodation, Home Care, Aids for Easier Living.

Office Hours: Mon-Fri 9.00 a.m.– 12.30 p.m.& 1.00 p.m. to 2.30 p.m.

### PRESCRIPTION COLLECTION & DELIVERY

An excellent service for the sick and housebound.

Brownhill Pharmacy, 782 Whalley New Road, Brownhill, Blackburn

Tel: 01254 249016

Langho Pharmacy, 1a East View Terrace, Whalley Road, Langho

Tel: 01254 247750

### CITIZEN'S ADVICE BUREAU

Admin: 01200 427336

### SAMARITANS

Tel: 01254 662424

Free call 116 123

### POLICE

The PCSO for Wiltshire is Caroline Pemberton. She can be contacted on the numbers below or on the Lancashire Constabulary website and clicking; 'contact an officer'

For non-urgent calls please telephone 101 or if this number isn't available telephone: 01772 614444 . TELEPHONE 999 ONLY IN AN EMERGENCY.

### CRIMESTOPPERS

This charity enables anyone to pass on information anonymously about any crime or criminal activity. FREEPHONE 0800 555 111

### TRAVEL INFORMATION

National and local travel information may be obtained from Clitheroe Interchange, Railway View Road. Tel 01200 429832. Northern Rail 0845 600 1159. Transdev (Buses) 0845 2 72 72 72

RIBBLE VALLEY BOROUGH COUNCIL Tel: 01200 425111 E-mail: [www.ribblevalley.gov.uk](http://www.ribblevalley.gov.uk)

## 'Report it-Lancashire County Council'

Online reporting facility:

Report a pothole, highway faults, broken streetlight, flooding on the highway, blocked drain, broken stile, blocked public footpath etc.

Simply type in the postcode nearest to the fault, zoom in or out or move the map to the problem area. Then click/choose from the problem menu, click on the map at the location of the problem and briefly describe it on the drop down fault details facility and make a note of the reference number issued.

**Parish Councils liaise with RVBC to raise concerns and help improve life for residents. The following is a report on work done in the last year.**

### Electoral Representation

There have been two Reviews in process during the last year:

Parliamentary Constituency Review. The proposals have proved controversial. Concerns and objections have been lodged on the grounds of practical difficulties for both RVBC and the MPs representing residents in Ribble Valley.

Ribble Valley Ward Review. New Ward boundaries have been needed to even out the number of residents in Wards because of an imbalance arising from the changing housing in the Borough.

### Lancashire Combined Authority.

It has been reported that this is unlikely to proceed as planned. There may be an Association of Lancashire Authorities similar to the current Association of Greater Manchester Authorities.

### RVBC Local Plan

One aspect of this which potentially affects Wilpshire is the change to the 'settlement boundary' of our area. This is a boundary used by the Planning Department and is more extensive than just the Wilpshire Parish even though it is described as Wilpshire Settlement Boundary. The main change is the inclusion of some land to the south of Whalley Road between Hollowhead and Parsonage Road.

### Retention of Pay Phones

All payphones which had been the subject of objection to removal have been successfully retained. These were those which were used regularly and those, though not much used, which would be invaluable in event of an emergency. BT is responsible for cleaning payphones, but routine attendance to collect coins and inspect the condition of boxes is no longer done and therefore faults needed to be reported.

### New Roundabout on the A59 at the Sabden Junction

The latest information is that work is now due to start in March 2018

### Beacons to Commemorate the End of World War I

The Pageant Master is co-ordinating the lighting of beacons across the country on 11<sup>th</sup> November 2018. Parishes with suitable locations were invited to participate.

### Veterans in Communities.

This charity is keen to make its existence known to potential members to avoid them being isolated and without support or direction for their difficulties. It is a charity based in Rossendale and was established to help servicemen adjust to civilian life. Veterans endeavour to help members themselves or, where they are unable to provide appropriate assistance, direct members to the right support agency. It has received support from East Lancs Clinical Commissioning Group, the MOD and the Borough of Rochdale among others. More information is available on their website and also from Councillor J White who is the Ribble Valley Borough Council Armed Forces Champion.



## Health and Wellbeing

The LCC Director of Public Health and Well Being has produced figures to illustrate the projected healthy lifespan for a child born in 2017. This is considerably less than the life expectancy. In some areas of the Ribble Valley such an average child may reach the projected retirement date in a healthy condition, whereas across other parts of the Ribble Valley and across most of Lancashire, the average child would not. This raises concerns about the quality of life as we age and the demand on services. Rural isolation is a growing concern. Dementia has replaced cardiac issues as the leading cause of death. Detailed statistics for small areas can be accessed through the Lancashire County Council website. It is considered that whilst not all problems are avoidable in 40% of cases lifestyle factors are significant.

## Ribble Valley Dementia Action Alliance

Please see the feature by Cllr Sue Bibby elsewhere in this Newsletter.

## Services run by LCC

The proposed cuts were implemented but following representations there has been some improvement to bus services and library services. Please use them. Concern has been raised about a lack of response about highway problems. A strong representation has been made to the Head of Service for Highways at Lancashire County Council to express Parish Councils' overwhelming disappointment at the lack of response to electronic communications and to seek reassurance that the issue will be addressed.

## Victim Support

All victims of crime residing in Lancashire are contacted by Lancashire Victim Support Service, regardless of the level of crime involved or the location of the offence. The service also acts to provide support beyond the crime for victims, referring or signposting them to other agencies as appropriate. It also offers counselling in various forms and pre-trial therapy.

There are processes in place for young victims of cyber bullying, Referrals can be made by telephone on 0300 323 0085 and email at [vcu.lancashire@victimsupport.cjsm.net](mailto:vcu.lancashire@victimsupport.cjsm.net).

## Little Green Bus

This charity is supported by local councils and is a vital lifeline for those in remote areas. Its services can be and are also used by Wiltshire residents. More volunteer drivers would be welcome for a service which takes people to medical appointments. The patient pays the volunteer driver 40p per mile for the distance travelled with the patient in the vehicle, the "dead mileage", to and from the patient's home from the driver's home, is covered by the charity.

## Heritage Open Days

The event, which lasts over a long weekend from Thursday to Sunday, has moved from concentration purely on opening historic places to public access to promotion of the stories behind the places and the people involved. Events did not have to be large in scale or serious. Further details on Heritage Open Days are available at [www.heritageopendays.org.uk](http://www.heritageopendays.org.uk) and Councillor Fenton (Clitheroe Town Council) can be contacted about it at: [cllr.fenton@ribblevalley.gov.uk](mailto:cllr.fenton@ribblevalley.gov.uk).

**Gates and Fences re-enforce the boundaries of your property.**

Check for weak spots where a thief could get in - a low or sagging fence, or a back gate with weak lock.

A thorny hedge along the boundary can act as a deterrent. But make sure that the front of the house is still visible to passers-by so that a burglar can't work unseen.

#### **IF YOU LIVE IN A FLAT**

**The most vulnerable part of your flat is likely to be the front door.**

Replace a weak door. It should be as strong as the main entry door. Fit hinge bolts which stop the door being pulled off its hinges

Fit a steel strip to the door frame to strengthen it.

Consider having a door telephone entry system installed. Never 'buzz' open the door for strangers or hold the door open for someone who is arriving as you are leaving.

#### **OTHER GENERAL HINTS AND TIPS**

If your house is going to be left empty, make sure all windows and doors are closed and locked and remember to set the burglar alarm.

Use special timers which you plug your lights into before plugging them into the mains to give the impression that someone is at home. Consider attaching one of these to the radio to make it appear that someone is in the house.

Lock away any ladders or other portable items that could be used to reach upper windows.

Use an invisible marking pen (UV Pen) to put your house number and postcode on as much property as you can particularly electrical goods.

Speak to trusted neighbours and ask if they can:

- Remove mail that maybe on show.
- Use your rubbish bins, placing them out and returning them on the correct day.
- Use your driveway to give the impression that someone is using the property.

Reduce the risk of burglary happening to you by making sure you've taken these simple precautions. For a relatively small outlay you could make your home more secure and buy peace of mind into the bargain.

Remember if looking for a private company to carry out any work to improve your security, make sure you get at least 3 quotes all from businesses that are trustworthy and well known.

#### **ACTIONS THAT MAY HELP US HELP YOU IF YOU HAVE BECOME A VICTIM OF CRIME**

Make a list of make, model and serial number of all high valued goods and store the information safely. This would aid the police and insurance companies if you were unfortunately to become a victim of crime. Some companies offer free registration of goods to be stored on electronic databases.

If make, model and serial numbers are not possible, for example with valued paintings, ornaments or jewellery, take photographs or video of these items with a coin or ruler beside them to indicate their size.

#### **MOTOR VEHICLES**

Thieves often look for opportunities to steal valuables from parked vehicles- if you can, park your vehicle in a well lit area and take your valuables out of the vehicle.

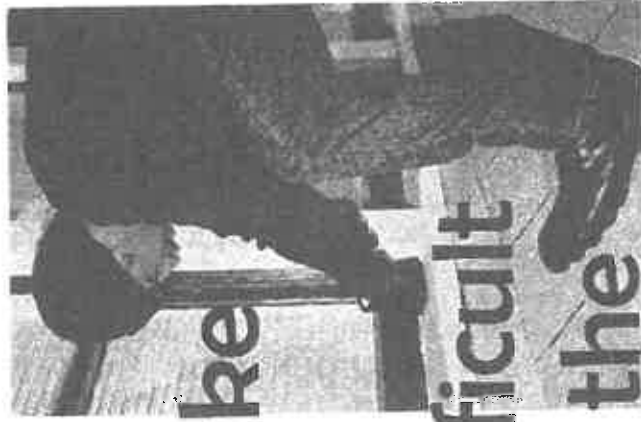
Items such as satellite navigation systems are especially attractive to thieves and should be removed.

Thieves will often check if vehicles are secure and if they are will move on.

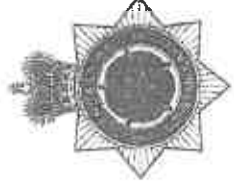
**An un-locked vehicle is a golden opportunity for a thief.....Lock it before you leave it !!!**



**ribble valley  
community safety  
partnership**



# Make it Difficult for the Burglar



**Lancashire  
Constabulary**

police and communities together

**Most burglaries are committed by opportunist thieves.** In two out of ten burglaries they don't even have to use force - they get in through an open door or window. **ALWAYS SECURE UNLOCKED DOORS AND WINDOWS, EVEN IF ONLY AWAY OR OUT THE ROOM FOR A FEW MINUTES.**

Look at your home through the burglar's eyes - are there places where they could break in unseen? Have you fitted strong locks on your doors and windows? Would they have to make a lot of noise by breaking glass?



## ALARMS

**Visible burglar alarms make burglars think twice.**

There are many systems on the market, ranging from cheaper DIY alarms to more sophisticated alarms costing hundreds of pounds. Easily installable 'wire-free' alarms are now available whereby sensors fitted around the house transmit radio detection signals to a control system. These systems usually take 3-4 hours to fit. Wired alarms are cheaper but take longer - around a day to install.

Again get specialist advice and a number of quotes from trustworthy companies. Consult your insurance company for companies they recommend before deciding which best suits your needs. The system should meet BS4737 (professionally installed) or BS6707 (DIY).

Remember, a badly-fitted alarm can create problems in itself. Don't install a DIY system unless you have the electrical knowledge and practical skill to do so.

## DOORS

**If your front and back doors are not secure, neither is your home.**

Make sure the doors and frames are strong and in good condition.

Glass panels on or around the door are especially vulnerable, if possible replace them with laminated glass.

Fit back and front doors with a five-lever mortice deadlock - and use it.

Fit all exterior doors - top and bottom - with bolts. Remember to fit all security devices with strong screws or bolts.

Fit both french doors, top and bottom, with a security mortice lock and mortice bolt.

Get specialist advice on fitting locks to patio doors. They should have special locks fitted top and bottom unless they already have a multi-locking and anti-lifting system.

If you're thinking of buying PVCu or metal framed windows or doors, make sure that they come with good built-in locks and a fitted chain, which can be very difficult and expensive to add retrospectively.

Look in your telephone directory for the names of local locksmiths who are members of the Master Locksmiths' Association.

## Hinges

Check that the door hinges are sturdy and secured with strong, long screws.

For added security fit hinge bolts. These are inexpensive and help to reinforce the hinge side of a door against the use of force.

## Door Viewers

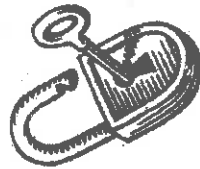
Enable you to identify callers before opening the door.

## Letterboxes

Never hang a spare key inside the letterbox - an obvious place that a thief will check.

## Spare Keys

Never leave a spare key in a convenient hiding place such as under the doormat or in a flower pot - a thief will look there first. If you're moved into a new house, consider changing the back and front door locks - other people may have keys that fit.



## WINDOWS

**A third of burglars get in through a back window.**

Easily visible locks may deter some thieves, because a window lock forces the thief to break the glass and risk attracting attention. DIY shops sell inexpensive key-operated locks to fit all kinds of window. UPVC windows can be re-enforced but may have to be upgraded by a trustworthy UPVC company.

Fit at least one key-operated window lock to all downstairs windows, those which can't be seen from the street and easily accessible upstairs window, eg. Those above a flat roof or by a drainpipe.

Even small windows such as skylights or bathroom fanlights need locks - a thief can get through any gap larger than a human head.

Remember to remove keys from locked windows and to keep them out of sight in a safe place.

Louvre windows are especially vulnerable because the slats can be removed easily from the frame. Glue the slats in place with an epoxy resin, and fit a special louvre lock. Better still replace them with fixed glass.

If you are replacing windows consider laminated glass. As a last resort, consider fitting security grilles to vulnerable windows - many DIY shops now sell decorative wrought iron grilles. Casement locks make it impossible to open windows without the correct key.

## LIGHTING

**Good lighting can deter a thief.**

Some exterior lights have an infra-red sensor that switches the light on for a few moments when it detects something in its range. Sensors can be bought separately to convert an existing outdoor light into a security one. Any work on current or additional electrical circuits should always be carried out by a fully qualified trades person.

## GARDENS

**Garages and Sheds host a delight of goods for a would be thief.**

Often full of expensive tools ideal for breaking into the rest of the house - and often left unlocked.

Never leave a garage or garden shed unlocked, especially if it has a connecting door to the house - a thief could get in and work on the inner door in privacy.

Fit shed and garage doors with a strong padlock and make sure that they are solid enough not to be kicked in.



Lock ladders inside the garage or shed to stop a thief using them to reach inaccessible windows. If there is no room inside, chain or padlock them horizontally to a sturdy bracket on an outside wall.

## Wilpshire Shops and Businesses

The following is a list of shops and businesses open to the public.

### Wilpshire Hotel

Along with cask ales and tapas, there is the opportunity to enjoy playing darts and snooker (small table) in the bar. There is also Sky Sports and BT Sport. Free WiFi is available.

David and Sharon Halstead host special events details of which are on their notice board. Small parties can be catered for.

Additionally, they provide outside catering for parties.

#### *Opening Times*

Monday	3pm - 10.30pm
Tuesday	3pm - 11pm
Wed & Thurs.	3pm - 12.30am
Friday	2pm - 1am
Saturday	Noon - 1am
Sunday	Noon - 11pm

### Angella Readfern Hair Salon, 5 Ribchester Road BB1 9JH

In her unisex hair salon Angella offers a personal service in all aspects of hairstyling.

#### *Opening Hours*

Monday	Closed
Tues	9.15am - 7pm
Wed & Thurs	9.15am - 8pm
Fri	9.15am - 7pm
Saturday	9am - 4pm
Sunday	Closed

Tel. 01254 248143

[www.angellareadfern.co.uk](http://www.angellareadfern.co.uk)

### Get Fresh Sandwich Bar 9 Whalley Road, BB1 9LQ

Sandwich bar featuring hot and cold food, cold drinks and barista coffee.

#### *Opening Hours*

Monday – Friday	7am – 2pm
Saturday	8am - 2pm

**Beech's Butchers, 11 Whalley Road, BB1 9LQ**

Local butchers, distributors of meat, poultry and vegetables. A wide range of new dishes, ready meals and home-made pies is now available.

*Opening Hours*

Monday to Friday	7.30am - 6pm
Saturday	8am – 4.30pm
Sunday	10am - 4pm

Tel. 01254 246612

[www.beechs.co.uk](http://www.beechs.co.uk)

**Right at Home, 15 Whalley Rd, BB1 9LQ**

Domiciliary care in the comfort of your own home.  
All levels of support from personal care and assistance with day to day tasks, through to complex conditions and care needs. A 24/7 live in service is also available.

*Office Opening Hours*

Monday to Friday 9am – 5pm

Tel. 01254 658899 office hours 24/7 out of hours mobile: 07715446095

Email: [julie.foote@rightathomeuk.com](mailto:julie.foote@rightathomeuk.com)

[www.rightathomeeastlancs.com](http://www.rightathomeeastlancs.com)

**Jeremy Makinson's Ribble Valley Studios, 23 Whalley Road BB1 9LQ**

Family portrait photography, in the studio or on location.

Contact details for an appointment are:

Tel. 01254 248838

[www.ribbonvalleystudios.co.uk](http://www.ribbonvalleystudios.co.uk)

[www.jeremymakinson.com](http://www.jeremymakinson.com)

**Post Office Services: The nearest counters are now at Swindlehurst's Newsagents, Whalley New Road and Spar, Portland Road, Langho.**

## Bull's Head to Co-op, Co-op, Co-op, Co-op, Co-op

Just in case you haven't noticed, the former Bull's Head Pub has been transformed into a Co-op Convenience Store with large car park which has six spaces for station users. The Store is open from 07.00 until 23.00 daily so very convenient and appears to be popular. It is a welcome addition to the range of local shops. Below are photos of the Bull's Head taken more than a hundred years apart. Which is more pleasing on the eye is for the individual to judge. Is all the 'Co-op' signage attached to the building (at least a dozen) really necessary? Signage overload is a modern day trend or curse depending upon your viewpoint.



## Public Transport Update 2018

The world of public transport continues to evolve and change and locally most of those changes have been for the better though, as this newsletter goes to press, the future of Clitheroe Interchange is in doubt due to possible LCC budget cuts.

However, as a result of improved L.C.C. subsidy the bus service between Blackburn and Longridge via Ribchester Road and Knowsley Road, now numbered 35, became an almost regular hourly interval one in December last year. Likewise the Rydings' estate gained an almost regular interval two hourly service to/from Blackburn via Mellor Brook and to Clitheroe via Brockhall and Whalley and numbered 25. Both services are operated by Preston Bus. Please use these services to ensure their survival. It's worth noting that the 35 service can also be used to reach Preston changing at Longridge as there is a very frequent service from there to/from Preston.

Our local train service ran to much the same timetable as in past years though reliability and punctuality have been patchy and not helped by industrial disputes and on-going electrification works beyond Bolton. Six car parking spaces for rail passengers were created when the new Co-op store opened next to Ramsgreave & Wilpshire Station but these are often occupied by 08.00 on weekdays. Patronage of our local station improved last year from 96 832 in 2015/16 to 113 542 a rise of 17.3%. From December 2017 the direct service between Blackburn and Manchester Victoria increased to half hourly throughout most of the day and this, combined with the hourly service to/from Manchester via Todmorden and Rochdale, gives the town its best links ever with that city. Sadly, getting to Liverpool by train is a different story!

More changes and improvements to services across N.W. England will take place in May. Refurbished trains are appearing on our local line and brand new trains will eventually appear on the Blackburn/Blackpool North/York express route. Also, this year the electrification of the Manchester/Bolton/Blackpool line should be completed. Whether the poor connections at Blackburn between the Ribble Valley Line trains and those to Preston and Leeds improve remains to be seen.

### Local Bus & Rail Timetables

Timetables for Transdev buses are available from their website. Other bus timetables are available at Clitheroe Interchange or from Blackburn Tourist Information Centre now located to Blackburn Market. The website: [www.traveline.org.uk](http://www.traveline.org.uk) will enable you to plan a journey by public transport, including sections on foot, from Wilpshire to any destination in the UK

Rail timetables are available from manned stations and Clitheroe Interchange. Local line timetables are best downloaded from the Ribble Valley Rail website at [www.ribblevalleyrail.co.uk](http://www.ribblevalleyrail.co.uk) This website also gives details of actual train running from Ramsgreave & Wilpshire Station. So you can check before leaving home if your train is on time. Go to the website, click on 'Timetables' then on 'Train Running', then click on 'Northern' and find your relevant station and train departure. The website has lots of other useful information about the local rail network as does the website [www.communityrail Lancashire.co.uk](http://www.communityrail Lancashire.co.uk) Our local station also has Help Points so that you can call Northern or British Transport Police.

Travelling further afield to the rest of Europe by train is easier than you may think despite an annoying absence of through services from the north of England. As well as the excellent [www.seat61.com](http://www.seat61.com) website, which provides comprehensive information about connections from London St Pancras to most European countries, the website [www.Loco2.com](http://www.Loco2.com) will give you times and fares from Ramsgreave & Wilpshire Station to many other stations in Europe.

### Fare Bargains

Whilst fares rose an average 3.4%, local rail travel is still cheaper than the parallel bus service and season tickets offer major savings to regular users – roughly four days for the price of seven. Two people travelling together Off-Peak (after 09.00) should purchase a Duo Return which entitles one person to travel for half fare providing two people return together. Just ask the conductor. NB Restrictions apply to return journeys from Manchester in the evening rush hour and in December.

Northern and other rail operators also offer Advance Fares which can be quite cheap e.g. Blackburn to Leeds– see their websites for details.

There are numerous Day Ranger and Rover Tickets covering Lancashire and the rest of NW England. One of the best value tickets for those travelling across Gtr. Manchester and into parts of Derbyshire and Cheshire is the 'Wayfarer' – a ticket available for purchase at Clitheroe Interchange and other manned stations in Gtr Manchester and Lancashire. It is also possible to buy Wayfarer tickets at ticket offices or from conductors on trains. A Wayfarer is valid from Darwen and can be used on all **trains, buses and Metrolink** after 09.30 and all day at weekends across a wide area e.g. to Matlock (train to Buxton then bus), Edale and Grindleford (near Sheffield), Leek, Northwich and Macclesfield to name but some destinations. Pick up a leaflet and map from Clitheroe Interchange or Manchester Victoria giving full details. Wayfarers cost only £12 with those with an English Concessionary Bus Pass paying only £8. There is also a Group Ticket for two adults and up to two children. See the Ribble Valley Rail website section – 'Promotions' for further savings' deals.

For longer journeys it is always worth checking for savings by breaking up your journey into shorter sections e.g. travelling to the West Country it can be cheaper to book to Birmingham and then again from there to your destination. Travelling to London can be significantly cheaper travelling via Manchester Piccadilly.

### DalesRail

The DalesRail train will run every Sunday from May 20th to September 9<sup>th</sup>. It calls at Ramsgreave & Wilpshire then continues via Clitheroe and the Settle-Carlisle Line to Carlisle calling at all stations en-route. From the train passengers can join guided walks of varying length from an easy stroll to a strenuous fell hike, take a town tour or wildflower ramble or a connecting bus to, for example, Wensleydale or down Swaledale, or simply do 'their own thing', or just enjoy one of the world's great railway journeys. For further details visit [www.dalesrail.com](http://www.dalesrail.com).



A regular sight at Ramsgreave & Wilpshire Station on Wednesday evenings in summer



## Play Area Improvements



The Parish Council has provided some £5000 of funding to extend the adventure play equipment installed last year. This addition makes the whole set of equipment a real challenge to children who visit the Durham Road Play Area. Other maintenance work has included painting existing equipment, provision of new signage and the lopping and pruning of surrounding trees. The existing goalposts will be replaced shortly.

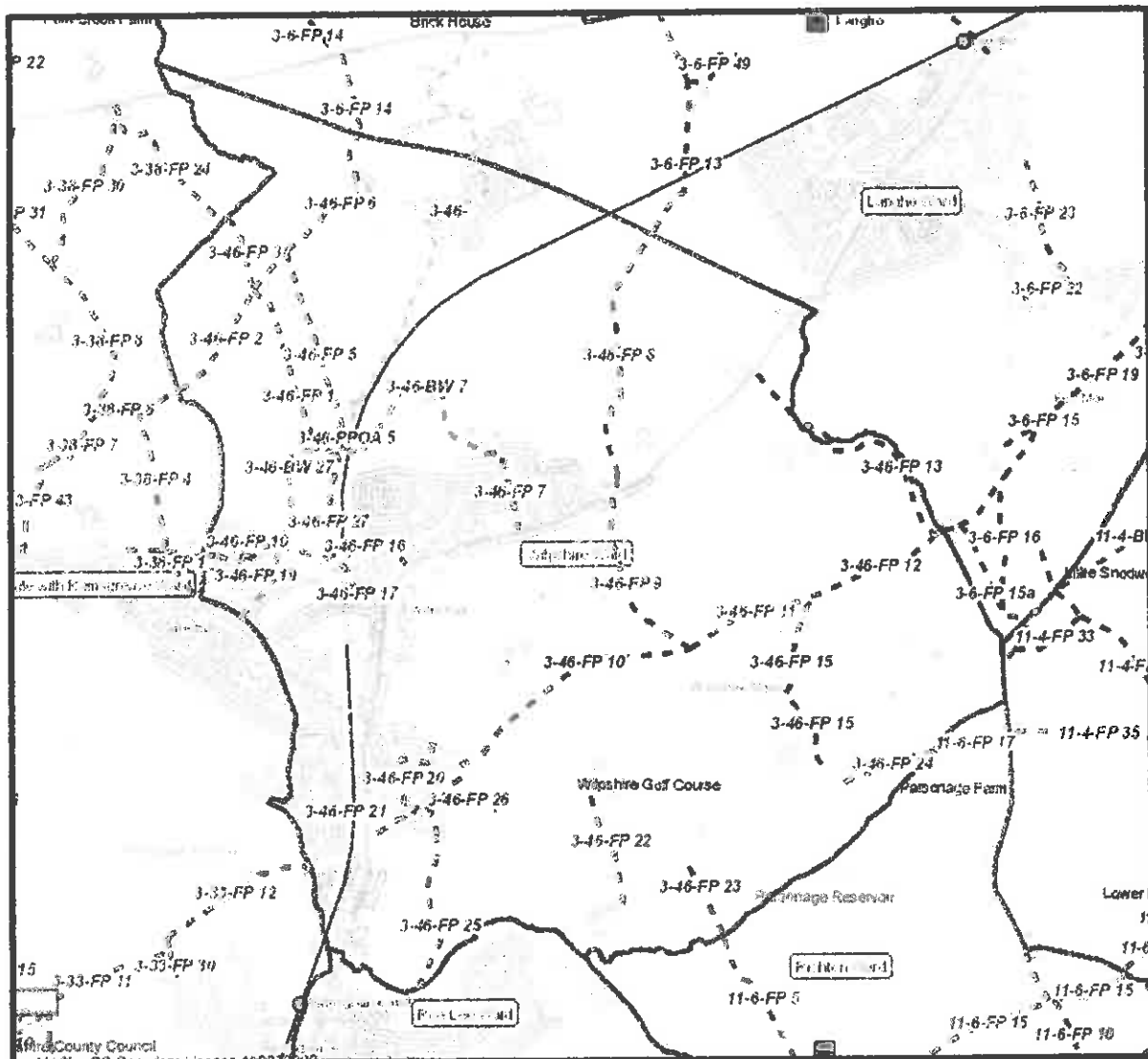
---

### Any unwanted furniture or electrical goods?

If you have any unwanted furniture or electrical goods – sofas, armchairs, lounge furniture, beds & bedroom furniture, TV's, washing machines, fridges, small electrical items etc. – then contact the British Heart Foundation on 01254 867 678 ( or on-line at: [bhf.org.uk/collection](http://bhf.org.uk/collection)) and they will collect them for FREE. They also arrange house clearance though this may incur a small charge.

---

## Wilpshire Footpath Improvements



The above map shows the footpath network within the Wilpshire boundary-taken from the online LCC Mario Maps, freely available for use by the public.

Wilpshire Parish Council has over recent years been undertaking a gradual improvement of some of these paths by requesting gates from LCC, strimming and major stoning of paths, notably FP 12 at Snodworth, FP 16 near Durham Road and FP 21 Knowsley Road railway underpass path.

The Council hopes to continue this work in future as resources and permissions allow.

Problems on the footpath network can be reported to LCC Public Rights of way using the online 'LCC-Report it' facility.

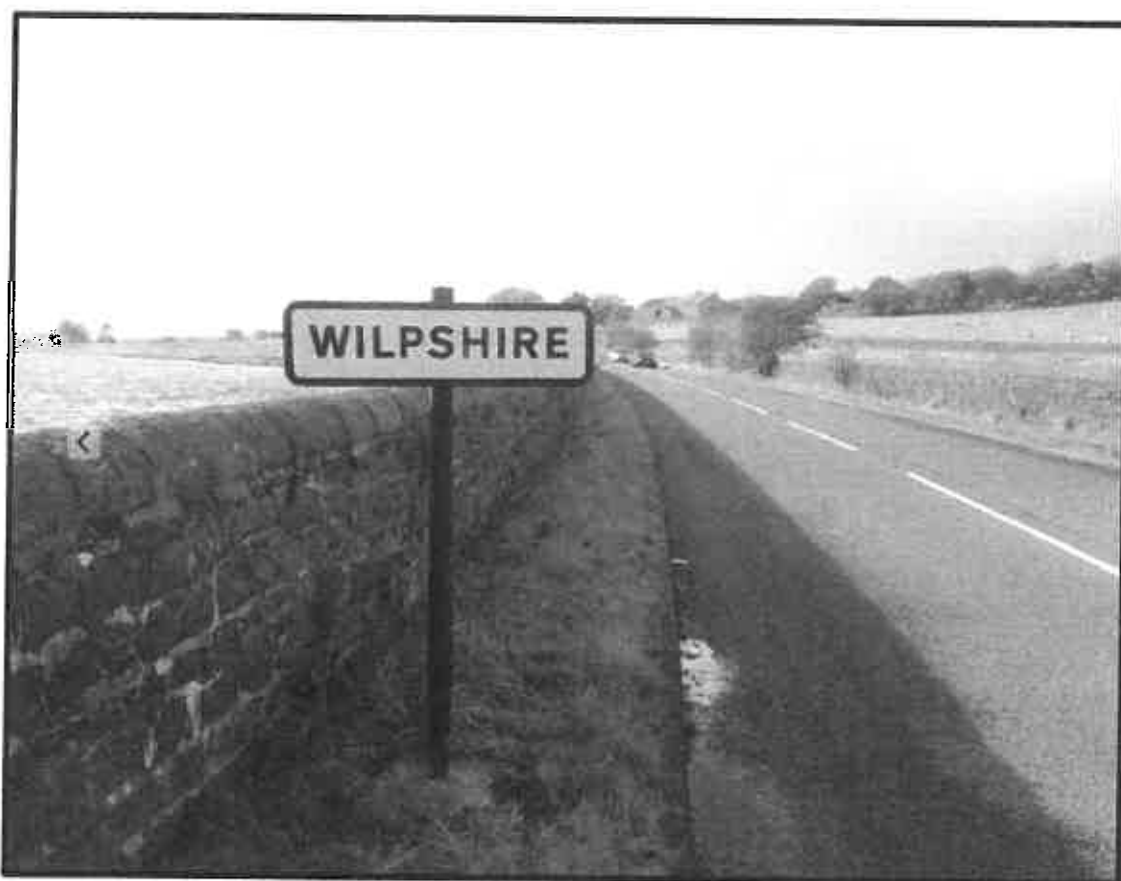
## Wilpshire Road and Street Signs

The maintenance, repair and replacement of the various signs around Wilpshire is the responsibility of three different councils.

Street or road name sign repair or replacement is the responsibility of **Ribble Borough Valley Council**.

Damaged or missing general highway traffic signs such as speed limits is the responsibility of **Lancashire County Council**.

Boundary signs other than County boundary signs are the responsibility of **Borough & Parish Councils** - Ribble Valley Borough Council require parishes to pay for any stolen or replacement parish boundary signs.



Some time ago the Wilpshire boundary sign at Parsonage Reservoir was stolen. Ribble Valley Borough Council would not pay for a replacement but were prepared to source and install a new one provided Wilpshire P.C. paid for it.

Lancashire County Council 'Parish Champion' Cllr. Paul Rigby very kindly responded to our application and granted £250 towards the replacement sign, the remaining cost being borne by Wilpshire P.C. It has now been replaced.

The 'Wilpshire Lengthsman' (at Wilpshire Parish Council cost), cleans highway traffic signs and boundary signs within Wilpshire as is necessary.

## Parish Council Walk –To the Trig Pillar



Sunday, May 7<sup>th</sup>, 2017 saw twenty seven people join the Parish Council Walk starting from Wilpshire Methodist Church and following a route via Vicarage Lane to Tippings Farm and then climbing up the ridge from Carr Hall to Little Snodworth. The party stopped on Fish Moor to enjoy the clear, panoramic views up Ribblesdale, across to the Bowland Fells and beyond, and to the coast. After dropping into Dean Clough a return was made to Little Snodworth before using the recently improved footpath towards the golf course. A diversion was made to climb up to the trig pillar on Wilpshire Moor where more great views were to be had. After crossing the golf course the party returned to the Methodist Church via Hollowhead and the old station subway. Beautiful weather, great views and an opportunity to meet fellow residents. This year's Parish Council Walk will take place on Sunday,



At the trig pillar on Wilpshire Moor – the highest point in Wilpshire

YOU ARE INVITED TO JOIN

THE WILPSHIRE PARISH WALK

**To Top o'th Heights and Beyond**

**SUNDAY, MAY 6th 2018**

A moderately easy five and a half miles' walk

**MEET OUTSIDE RIGHT AT HOME (OLD P.O.) AT 1.30 P.M.**

On our walk we will:

- head up Hollowhead Lane
- drop below Parsonage Reservoir dam
- climb to Middle Mickle Hey
- follow the ridge to Top o'th Heights
- return above Dean Clough to Parsonage Farm
- drop down the golf course to Whalley Road
- learn some more about the local area

All of this using the parish's local public footpath network

Come and meet some of your fellow residents and parish councillors

WEAR BOOTS, WELLINGTONS OR STOUT SHOES – the route may be wet  
and muddy in places

**BRING A WATERPROOF, DRINKS AND A SNACK**

## Wilpshire Methodist Church

The calling of the Methodist Church is to respond to the gospel of God's love in Christ and to live out its discipleship in worship and mission. We do this through:

**Worship** - The Church exists to increase awareness of God's presence and to celebrate God's love.

**Learning and Caring** - The Church exists to help people to grow and learn as Christians, through mutual support and care.

**Service** - The Church exists to be a good neighbour to people in need and to challenge injustice.

**Evangelism** - The Church exists to make more followers of Jesus Christ.

Wilpshire Methodist Church is part of The Methodist Church in Britain, working in partnership with 12 other Methodist and one joint Methodist and United Reformed Church in The West Pennine Moors Circuit (covering Blackburn, Darwen, Accrington Oswaldtwistle and Haslingden). Wilpshire Methodist Church works particularly closely with the Methodist Churches in Lammack and Mellor under the guidance of Rev Stuart Smith. We regularly hold joint acts of worship, have joint study and fellowship groups and a Church Family Weekend Away.

We also have links to Trinity URC and work closely with St Peter's in Salesbury. In the lead up to Christmas Wilpshire and St Peter's organised a *Roaming Nativity* which saw over 100 people traveling from the Methodist Church to St Peter's via The Bonny Inn and St Peter's School. On the journey various elements of the Nativity story were encountered and we concluded with singing carols and enjoying refreshments. We were blessed with fine weather made very atmospheric by a touch of fog.

We are looking to build on this with some joint worship just before Lent and shared study groups during Lent. We are also planning a *Family Passover Meal* on Maundy Thursday and an enactment of *The People's Passion* on Good Friday. Riding Lights Theatre Company have provided the resources for a powerful piece of theatre and worship, *The People's Passion* brings the congregation together to witness the events of Jesus' last week. There is a part for everyone and no rehearsal needed. There are parts for groups and parts for individuals, music and moments of reflection.

These are exciting times, why not come and join us?

Rev Stuart Smith

## **Wilpshire Methodist Church**

**Ribchester Road, Wilpshire, Blackburn BB1 9HU**  
**Rev Stuart Smith 01254 691765 revstu@outlook.com**

<b>Sunday</b>	<b>9:45am</b> <b>10:30am</b>	<b>Prayers</b> <b>Sunday Worship and Junior Church</b>
<b>Monday</b>	<b>9am-12 noon</b> <b>2:30pm</b> <b>4:30pm-9:30pm</b> <b>6:15pm-9:15pm</b> <b>7:30pm</b>	<b>Pilates</b> <b>House Group (last Monday of month)</b> <b>Dance Academy</b> <b>Pilates</b> <b>House Group (1<sup>st</sup> and 3<sup>rd</sup> Mondays)</b>
<b>Tuesday</b>	<b>2pm</b> <b>6:15pm</b> <b>7pm</b>	<b>Manse Fellowship (Second Tuesday of month)</b> <b>Brownies</b> <b>Guides</b>
<b>Wednesday</b>	<b>5pm-8pm</b> <b>7:30pm-9:30pm</b>	<b>Dance Academy</b> <b>A Capella Singers</b>
<b>Thursday</b>	<b>9:30am-11am</b> <b>12:30pm</b> <b>4pm-8:30pm</b> <b>7:30pm</b>	<b>Parents and Toddlers</b> <b>Lunch Club (first Thursday of month)</b> <b>Dance Academy</b> <b>Manse Fellowship (Third Thursday of month)</b>
<b>Saturday</b>	<b>10am-3:30pm</b>	<b>Dance Academy</b>

## Wilpshire Methodist Guides

Wilpshire Methodist Guides are an enthusiastic group of over 20 girls aged between 10 and 15 years who meet at Wilpshire Methodist Church on a weekly basis. The leadership team have two adult leaders, a Young Leader working on her Adult Leadership award and two Duke of Edinburgh volunteers working on their Service part of their Bronze Award.

Meetings are spent on a variety of exciting activities, mostly chosen by the girls to help with making their own choices and can range from making rockets and craters for a Space Go For It to making a clapper board for their Film Lover's badge. We also go out and about and have helped the church by posting flyers through the doors of the local neighbourhood to help promote the church calendar, cooking dampers on fires and watching fireworks. Recently the Guides took part in the Roaming Nativity between Wilpshire Methodist Church and St Peter's Church. They were elves, reindeers, angels, shepherds and even a camel. Over 100 people joined in from the local community and Christmas was truly present in its most pure form.

We have been on camps at the local campsite at Waddow near Clitheroe where the girls learn to put up tents and how to manage life living outdoors. This year was "I'm a Guide get me out of here" theme and did include eating some weird delicacies like chocolate covered brussels and marshmallow witchetty grubs!

Trips out have included a train trip to Bradford to visit the National Science and Media Museum to conclude their Film Lover's badge which included a film in the IMAX experience in 3D. We visited Blackpool for the Illuminations and had their pictures projected onto the Tower as well as having the traditional fish and chips and spending all their money in the rock shop.

Four of our older girls are working on their Baden Powell Trefoil which is the highest award they can achieve at this age. They have to do ten activities which encourage them to look at healthy lifestyles, global awareness, diversity, cultures, environment and skills and relationships. The girls have to plan their activities and carry them out either independently or with other guides. Up to now we have had a Diwali night and a Mexican night including Day of the Dead craft and a Pinata.

Guiding helps the girls grow and develop in a safe and secure girl only space. They are challenged with activities and tasks they may never have tried on their own and encouraged to attempt, even if it results in failure. Guiding offers friendship and fun for all who attend.

If you are interested in finding out more or volunteering please contact Lorraine Hunt on [a\\_hunt1@sky.com](mailto:a_hunt1@sky.com)



**SALESBURY MEMORIAL HALL**

# *ACTIVITIES*

		Main Hall	Upstairs
<b>Healthy Life Style Latin/Ballroom Sequence dancing</b>	<b>Monday</b>	<b>10:15am 11:30am</b>	
<b>Guitar Group</b>	<b>Monday</b>		<b>6:30pm</b>
<b>Metafit Kettlercise Clubbercise</b>	<b>Monday</b>	<b>From 6:00pm</b>	
<b>Ladies Badminton</b>	<b>Tuesday</b>	<b>1:30pm</b>	
<b>Metafit Kettlercise Clubbercise</b>	<b>Tuesday</b>	<b>From 5:45pm</b>	
<b>Zumba</b>	<b>Wednesday</b>	<b>6:05pm</b>	
<b>Senior Badminton (18+)</b>	<b>Wednesday(ex4<sup>th</sup> in month)</b>	<b>7:30pm</b>	
<b>St Peter`s Salesbury Mother`s Union</b>	<b>4<sup>th</sup> Wednesday in month</b>	<b>7:45pm</b>	
<b>Salesbury under 5`s (mums&amp; toddlers )</b>	<b>Thursday</b>	<b>9:30am</b>	
<b>Pilates</b>	<b>Thursday</b>		<b>6:00pm</b>
<b>Metafit Kettlercise</b>	<b>Thursday</b>	<b>From 6:00pm</b>	
<b>Pat Eaket`s school of Dance &amp; Drama</b>	<b>Friday</b>	<b>4:00pm</b>	
<b>Ribble Creative Stitchers</b>	<b>3<sup>rd</sup> Friday in month 3<sup>rd</sup> Saturday in month</b>	<b>7:30pm 10:30am</b>	

## *Tennis Courts*

**Parish Council Meetings**

**ROOMS AVAILABLE FOR HIRE**

**ALL ENQUIRIES — MRS B CRAVEN**

***TEL:01254 249425***

*24<sup>th</sup> January 2018*

***SALESBURY MEMORIAL HALL***

***Rooms available for hire***

***CHILDRENS PARTIES***

***QUIZZES***

***DISCOS***

***BEETLE/WHIST DRIVES***

***DANCES***

***MEETINGS***

***JUMBLE SALES***

**DISABLED ACCESS  
CAR PARK**

**P.A. System**

**MAIN HALL-GROUND FLOOR**

**2 ROOMS UPSTAIRS**

**KITCHEN**

**ALL ENQUIRIES**

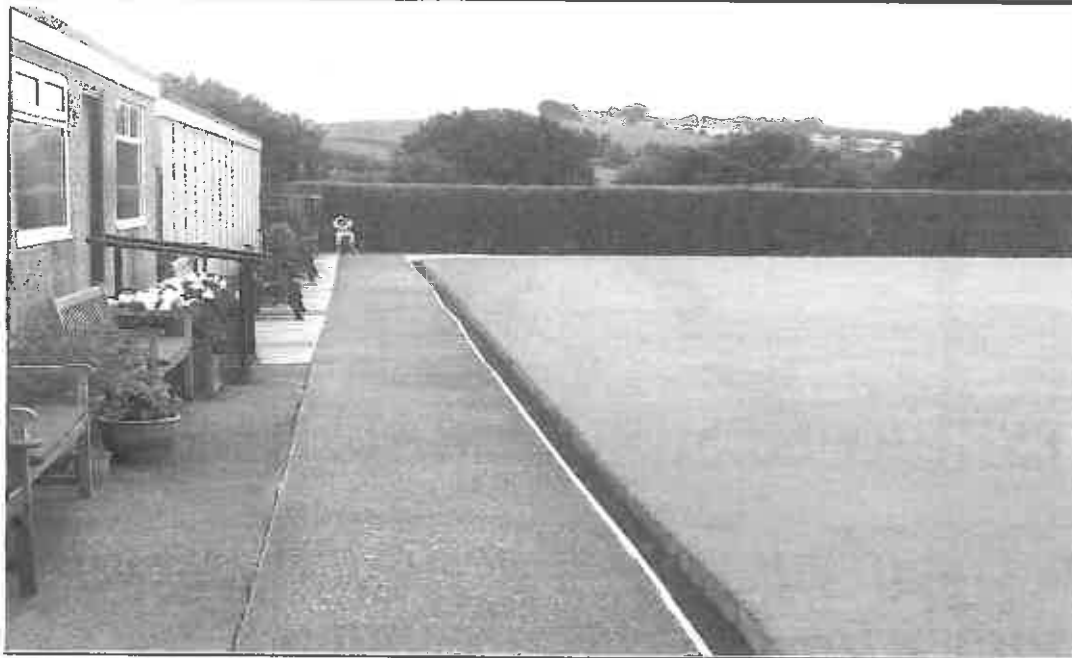
**MRS B CRAVEN**

**TEL**

**01254249425**

**24<sup>th</sup> January 2018**

## **SALESBURY MEMORIAL HALL BOWLING CLUB**



### **ARE YOU INTERESTED IN TAKING UP CROWN GREEN BOWLING?**

Salesbury Bowling Club is accepting new members and would welcome people who are interested in taking up the sport or continuing to play.

Adult and Junior coaching will be available next season.

The Green is in excellent condition and maintained to a high standard by our Green Staff throughout the year. We bowl from April to October.

SBC is BCGBA registered and has nine Teams playing in the Blackburn, Darwen and Great Harwood Leagues and also has an active Social Bowling Programme on three afternoon's each week and Sunday evening.

We hold several Internal Club Competitions and in October we hold an annual Open Floodlit Doubles Competition which attracts many top bowlers.

Our Members also enjoy our Social Events such as our President's Day, the Summer Bowls Outing, and Christmas Lunch at a local venue plus Whist Sessions played on three afternoons each week in the winter.

SBC IS A VERY FRIENDLY CLUB WITH GOOD FACILITIES – HAVE A LOOK AT OUR WEBSITE: <http://salesburybowlingclub.simdiff.com> or have a look at the Green (situated behind the Memorial Hall, off Ribchester Road, Salesbury) for more information please telephone

**THE CHAIRMAN, ALAN MERCER, 01254 247258**



## **SALESBURY MEMORIAL HALL TENNIS CLUB**

***Tennis is a great way of getting fit, so join today  
and play with your family and friends at your  
local tennis courts in Salesbury***

***Conveniently located behind the  
Memorial Hall on Ribchester Road***

<b>Family Membership – Must include an adult</b>	<b>£50</b>
<b>Senior Membership – 16 years and over</b>	<b>£25</b>
<b>Junior Membership - 11-15 years inclusive</b>	<b>£15</b>

**For Membership or further information contact:  
Marguerite Webb  
1 Vicarage Lane  
Wilpshire BB1 9HX**

**Email: [margueritewebb1@gmail.com](mailto:margueritewebb1@gmail.com)  
Tel: 01254 240804/0781 5676380**

**Payment: Cheques made payable to - Salesbury Memorial Hall**



## SALESBURY CRICKET CLUB

Salesbury CC was founded in 1906 and first played in the Blackburn Sunday School League. Today we run three senior teams in The Houldsworth Ribblesdale Cricket League.

We also have a thriving junior section with teams at age groups U9, U11, U13, and U15 playing in the Lancashire Colts League and an U18s team playing in the Ribblesdale League Knockout Cup. Salesbury have been credited with E.C.B. Clubmark Status, showing that we reach the highest standards of junior infrastructure and child safety.

For the last few years the club has employed the services of a professional to strengthen the team and run coaching sessions. For 2018 we will have Hashen Ramanayake from Sri Lanka. The club looks to support players of all ages and abilities, male and female.

The now annual Golf Day has been arranged for April 13<sup>th</sup> 2018 at Wiltshire Golf Club

St. Peter's Church held a fund raising game on the ground last summer, which proved hugely popular and of great benefit to both the Church and the Club. We aim to arrange a successful repeat during 2018 and this will be publicised when details confirmed.

We welcome any new members, both playing and non-playing, who are keen to join an ambitious, progressive but family orientated cricket club. We welcome any players that wish to play only the occasional game.

For further details please email Andrew Green (Chairman): [chairman@salesburycc.co.uk](mailto:chairman@salesburycc.co.uk)

## **Wilpshire Golf Club**

Wilpshire Golf Club is a respected 18 hole moorland golf course boasting stunning views from its highest point towards the Fylde Coast in one direction and the North Yorkshire Dales in the other. Despite the damp East Lancashire climate, the course remains playable throughout the year thanks to the tireless work of the dedicated greens staff.

Attracting new players to the game of golf remains a challenge to all Golf Clubs and Wilpshire is no different in this regard. Wilpshire Golf Club is determined to play its part in encouraging newcomers to the game and destroying the mistakenly held myth that golf is an elitist sport with restrictive outdated policies. The club welcomes applications for membership from Ladies and Gents in all categories and particularly Juniors. The club has a range of membership options with staggered pricing up to the age of 35. The club will soon be promoting an 18 month full membership (over 35) until 30<sup>th</sup> September 2019 for £67.00 per month. Junior membership is available for £75.00 which will include coaching sessions. In an effort to attract those new to the game, the club will be holding an Open Day on Wednesday 11<sup>th</sup> April 2018 where novices can take a look at the golf course, club facilities and meet members. Those interested in taking up the game will be offered a course for two months where they will receive group coaching sessions with equipment provided from the resident PGA Professional Scott Connor for only £25.00.

Wilpshire Golf Club is also determined to promote the use of the clubhouse facilities particularly by those residing in the local community. The club is regularly used for a wide range of functions such as birthday parties, wedding receptions, christenings, funerals and business meetings and receives excellent feedback from customers about the venue and catering on offer.

The club is keen to encourage residents of the local community to take up Social Membership available at £20.00 per year which gives full access to the clubhouse and facilities including a discount of 15% on drinks. The club boasts a full size snooker table in the members lounge with Sky Sports available in the main function lounge and members lounge. Plans are currently in place to refurbish the members lounge which will hopefully be completed in the Spring.

Come and take a look at what is on offer right on your doorstep at Wilpshire Golf Club, we are sure you will be pleasantly surprised.

Further information can be obtained by contacting the club on 01254 248260 or by e-mail at [admin@wilpshiregolfclub.co.uk](mailto:admin@wilpshiregolfclub.co.uk)

Ian Procter  
Club Manager

[www.wilpshiregolfclub.co.uk](http://www.wilpshiregolfclub.co.uk)

## Ribble Valley Dementia Action Alliance

As each New Year rolls in, I think about what's been achieved in the past year and what can be better next year, and I do have a plan to continue to help others.

Last October I was elected Chair of Ribble Valley Dementia Action Alliance, a community organisation dedicated to helping people living with dementia and their families and carers. Our partnership of organisations and businesses works hard to make Ribble Valley dementia friendly, to create an environment of accessible places and dementia awareness.

Our steering group has representatives from The Alzheimer's Society, care providers, churches in Ribble Valley, Ribble Valley Borough Council, Lancashire County Council the NHS and a carer.

Our ethos is to ensure that people living with dementia, families and carers are at the heart of our work, as only they can tell us what they need, and how we can change our spaces and our understanding.

Dementia is caused when the brain is damaged by diseases, such as Alzheimer's disease or a series of strokes. There are over a hundred types of dementia and symptoms may include memory loss, difficulties with thinking, problem solving or language. Dementia is progressive and there is no known cure.

Statistics show that by 2025 1million people in the UK will be living with dementia.

As an Alliance we have been up and running since 2011 and with our partners have provided respite care across Ribble Valley, Rimington, West Bradford and Clitheroe.

We have also provided many dementia awareness sessions across Ribble Valley, and activities around therapies, crafts, singing and exercise.

We are registered with Alzheimer's Society as Dementia Friendly Ribble Valley which covers the whole of Ribble Valley and deliver the Alzheimer's strategic plan to facilitate Dementia Friendly Communities. We have recently received recognition from Alzheimer's for making a difference in our Borough.

In November I did a presentation to Parish Council Liaison committee to encourage all our parishes to work towards becoming dementia friendly and received some amazing feedback and invitations to deliver awareness sessions.

I am, of course, keen to make Wilpshire and our surrounding area dementia friendly and to provide facilities for our community. To that end, we have an exciting project starting in the spring at The Sanctuary at Old Langho providing activity and respite care, a much needed facility on this side of the Borough.

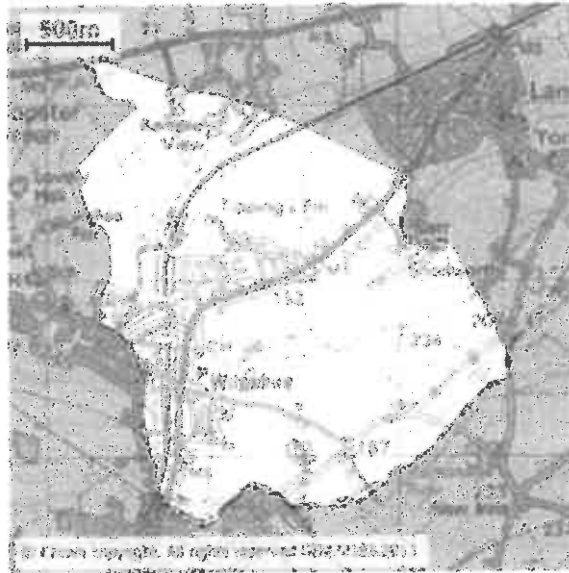
We also have a one stop hub project in our sights which will progress in the New Year.

I would be happy to hear from anyone with dementia and their carers, also volunteers who can help to make our area dementia friendly (mobile number 07944 756077).

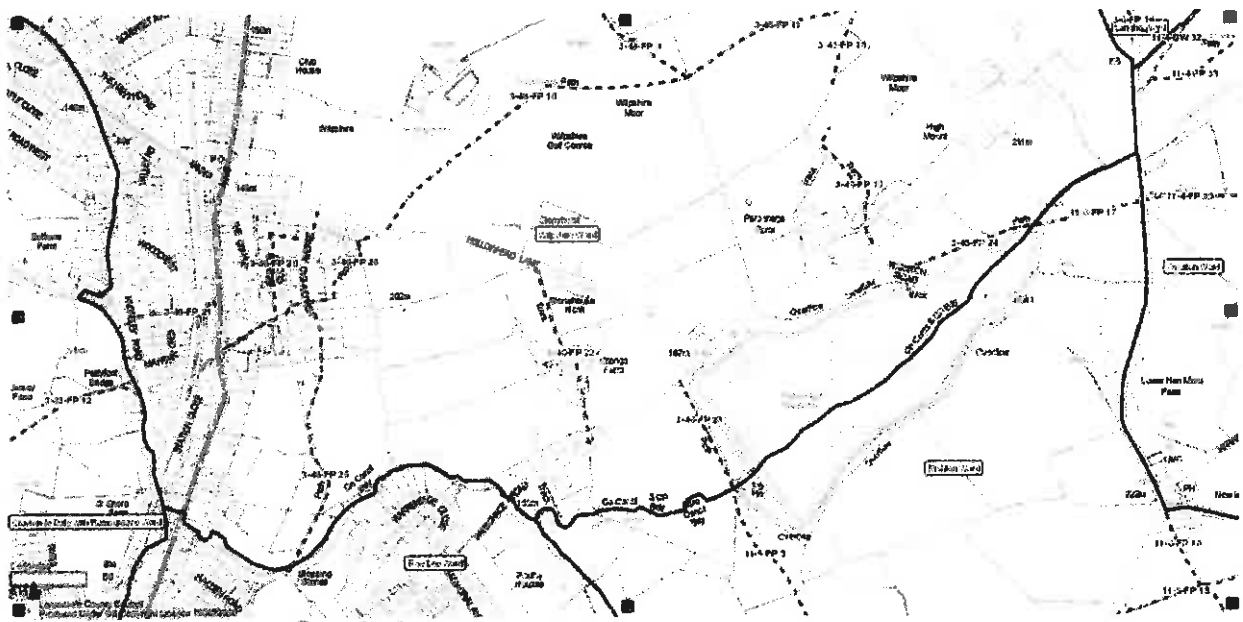
Please like our Facebook page 'Ribble Valley Dementia Action Alliance' and join us.

Borough Councillor Sue Bibby.

# The Wilpshire Boundary



This 'Rough guide' of the boundary starts from the Wilpshire Parish Council meeting place at Wilpshire Methodist Church. The solid boundary lines on the following maps indicate where Wilpshire adjoins other parishes and other local authorities.



Setting off from Wilpshire Methodist Church and then heading down Knowsley Road our boundary is in contact with Clayton le Dale and Ramsgreave Wards; shortly after we pass under the railway bridge it takes an abrupt turn east across Showley Brook at Blackburn and then generally follows the brook upstream past Warrenside Close in



**Blackburn, crossing over Parsonage Road on a bridge and following Knotts Brook and then across the centre of Parsonage Reservoir;**



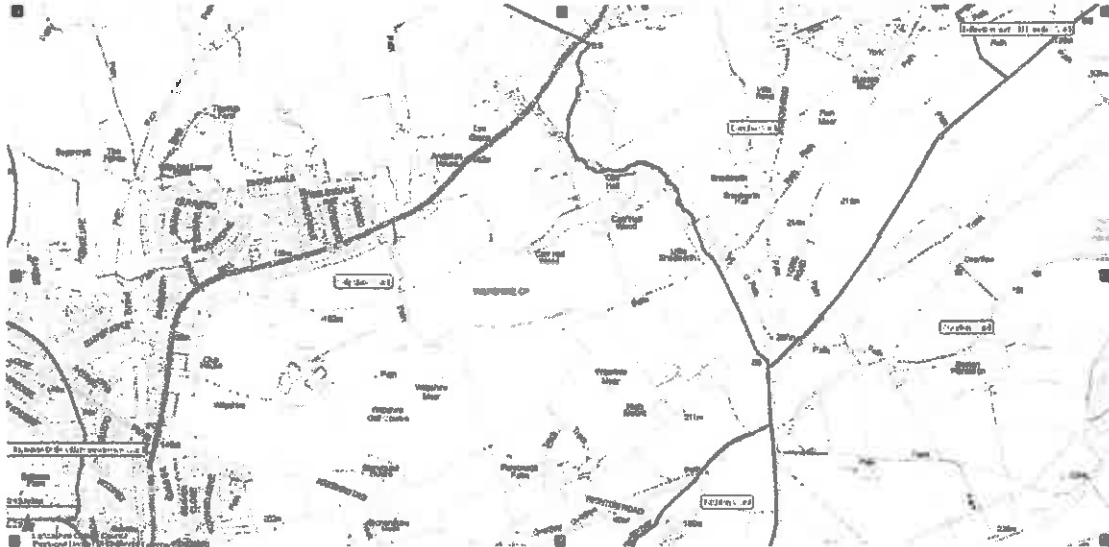
**Replacement boundary sign at Parsonage Reservoir**

**From the reservoir the boundary crosses the fields continuing to York Road, here touching Langho Ward and Hyndburn.**

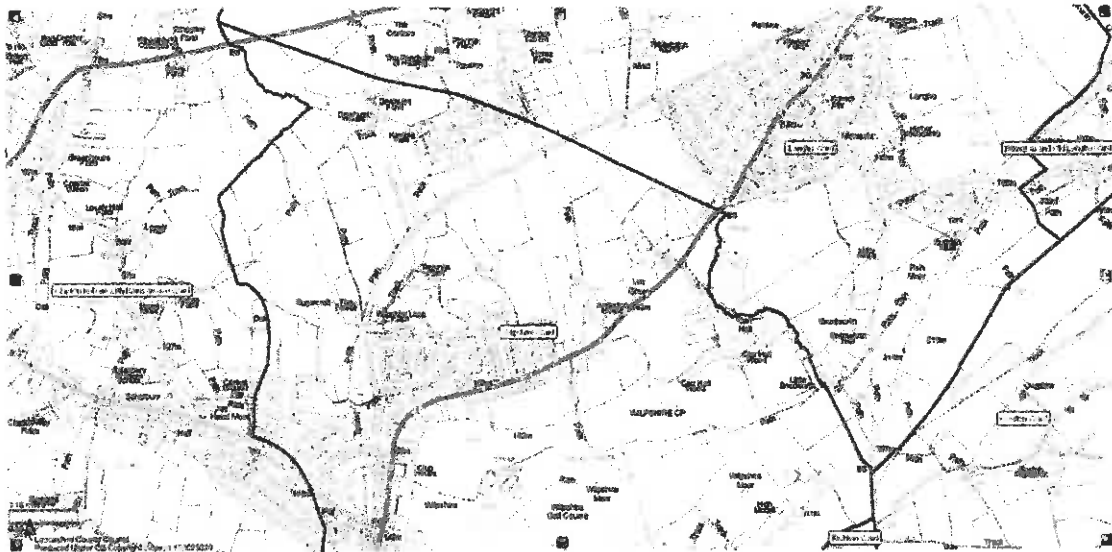


**The above picture is at York Road-Wilpshire's heritage A666 boundary sign re-homed on the boundary line adjacent to a flat boundary stone in the foreground.**

**From this sign and passing to the west of Little Snodworth, the boundary follows the stream down to Carr Hall cutting through the fields to the A666 at the shared Wilpshire & Langho/Billington boundary stone as shown in the picture below.**



**Then cutting across the A666 on a long diagonal line our boundary crosses fields and the railway line and then through the centre of 'the Rydings' with Kemple View Hospital within Wilpshire and the 'Sanctuary of Healing' on the Langho /Billington side, ultimately crossing the A59 at it's most northerly point.**



Returning and recrossing the A59 (on a bridge over the brook) is situated the Wilshire & Salesbury boundary stone (also renovated by Wilshire Parish Council).



From here our boundary zig-zags uphill through the fields and through the rear gardens of The Hazels adjacent to Salesbury Common; turning abruptly east at Ribchester Road, (Where Wilpshire, Salesbury and Clayton le dale meet), crossing Ribchester Road at the Knowsley Road junction thence back to our starting point at Wilpshire Methodist Church.

### **Mario -(Maps and related Information Online)-LCC**

This is a Lancashire County Council online facility and contains a wealth of information.

The maps in the above article 'Rough Guide' of Wilpshire's boundary were taken from 'Mario' and can be seen in more detail as required on the site. (Clicking on ward boundary on the local government information on the left-hand side menu and drilling/zooming down/moving map to the area of interest).

The maps can be overlaid with information such as Public Rights of Way, Ward and Council boundaries, Crime and Public safety, Highways and Transport, Aerial Photographs and Historic Maps.

---

*Salesbury Explorers' Group*

*[www.segs.org.uk](http://www.segs.org.uk)*

*Salesbury walking group*

*-monthly walks of about 7 miles in the company of mostly local people.*

*Please follow the above link for the current walking programme*

*New programme of walks each*

*September*

*All welcome!!*

## IN FLANDERS FIELDS



Each Remembrance Sunday we hear the names of those of our Parish who have paid the ultimate sacrifice and given their lives in the wars of the last century. It could be that some of these men are known to you on a personal level – the sacrifices they made and who they left behind. My husband James' Great Uncle Bob Foote was killed at Arras in the summer of 1917 and a few months ago it was with great pride that we visited the Arras Memorial and cemetery to pay our respects to him.

Before we embarked on our Flanders Fields trip I gathered some information on some of the fallen of our Parish with the intention of trying to find their graves or memorials so that we could also pay respects on behalf of our Church. Despite having access to various genealogy sites I was very sorry not to be able to find our more personal stories and would be really interested to hear from anyone who has any knowledge of those we traced. As everyone says who visits the World War One Cemeteries it is a moving and humbling

experience and on behalf of the Church I was able to leave crosses for a few of those men who died during the summer of 1917 – at Arras and Ypres.



At Arras is buried Private William Priest of the 10<sup>th</sup> Battalion The Loyal North who died aged 25 on 9<sup>th</sup> April 1917. William was the son of Harry and France Priest of 8 Irving Place, Blackburn.

At Tyne Cot Military Cemetery near Passchendaele we paid our respects to Private John Wilkinson, 1<sup>st</sup> Battalion East Lancs who died aged 19 on 4 October 1917. He was the son of Walter and Alice Williamson of 6 Shore, Wiltshire. (I think this was situated near the old railway station near Knowsley Road).

Private John Duckworth of the 8<sup>th</sup> Battalion the Loyal North Lancs died aged 34 on 4 August 1917. Private Duckworth was the son of Mr and Mrs John Duckworth of 47 Meadow Street, Blackburn and as he had no known grave his name is recorded on a panel at the Menin Gate in Ypres.

Between Poperinghe and Ypres is a village called Vlamertinghe and here we paid our respects to Private T E Lord of the 1<sup>st</sup> Battalion the Loyal North Lancs who died aged 32 on 1<sup>st</sup> June 1917. Private Lord was the son of Mr and Mrs Edmund Lord of Balderstone and left a wife who lived at Deneley, Copster Green.

Privates Wilkinson, Duckworth and Lord all died during the campaign we know today as the 3<sup>rd</sup> Battle of Ypres.

*Diane Foote*

## Wilpshire Memories

Peter Johnson has lived in Wilpshire all his long life and has seen many changes. Peter was born in 1936 in a house called Cranthorpe on Whalley Road. The nameplate of the house, which is still on the gatepost, was placed there by his father. The name is a combination of Christopher Thorpe and Annie. The house, a semi, was built in 1933 so was new when Peter's parents bought it. Sadly, when he was only a few years old, Peter's father died of T.B. leaving his mother to raise two children alone. They had to move to a rented house further along Whalley Road. His mother took in a lodger to supplement her income – a police constable who was working at the nearby Wilpshire Police Station. The Police Station was run by a sergeant whose family also lived there. Peter's mother eventually bought her house and Peter and his late wife, Marjorie, continued to live there down through the years. Indeed, the only time Peter left Wilpshire was to do his two years' National Service starting in 1954. Peter says that this was an important time in his life as he met people from many different backgrounds and the experience taught him self-discipline and respect.

Peter's childhood years spanned World War 2 which, he said, passed without incident as Wilpshire was far from areas subject to air raids. Back in the 1940's Wilpshire's built-up area was much smaller, confined to the houses on Whalley Road, Somerset Avenue and Vicarage Lane. The countryside was on the doorstep and to a young child was one large adventure playground. The 1940's (and 1950's) was a period when children could roam freely, traffic was light and health and safety were ruled by common sense and experience rather than regulation. Hence, the quarry on Hollowhead, the golf course, railway embankments and fields were playgrounds. Parents rarely knew where their children explored. They came home when they were hungry and, in Peter's case, that might not be for some time as he and his friends would buy a loaf and share the dry bread to stave off hunger.

Peter attended Salesbury School which meant walking there in the morning, returning home for dinner and then walking back for the afternoon session and home again on foot at the end of the day. Sometimes Holgates' coal lorry would pass and he and his schoolmates would be offered a lift home on the back. Sundays were spent at St. Peter's Church – morning service in the choir, home for dinner, back for afternoon Sunday School, home for tea then back for the evening service.

Summer holidays were always spent at relatives who lived in a mining hamlet on the Cumbrian Coast near Workington. Getting there involved an epic journey by bus from Wilpshire to Preston via Longridge, then a bus to Keswick and from there to Workington followed by a final local bus to his aunt and uncle's. It was there that V.J. Day celebrations took place in 1945 with a street party but the beach was off-limits as it was still mined.

Wilpshire in the 1940's and 50's had numerous shops as supermarkets were unheard of and Blackburn was a bus ride away. The butcher's was trading back then in the same location but next door was a private house. Two grocers' shops supplied the residents' needs – The Royal Stores (now the photographer's) and Jack Stott's (now the hairdresser's). People would visit these stores on an almost daily basis in a time when refrigerators were a luxury item. Many customers had an account which they settled at the end of each week. The Post Office was at Stott's shop. Surprisingly, the newsagent's was located at the old railway station in a small wooden hut adjacent to the cobbled path (still there) leading to the ticket office. It was at this location because the wealthy clientele of Wilpshire's large villas and mansions would buy their newspapers before catching the early morning train to Manchester. The newsagent also sold sweets and cigarettes. As most residents had morning and evening papers the payment of their bills involved a walk along Whalley Road each week.

Peter commented that sweets seemed to play an important role in life back then. The third cottage down from The Wilpshire Hotel – Penny Post – was originally a sweet shop run by a character called Billy Banks and well known for his long twisted moustache. Another sweet shop could be found in the first cottage on the left going down Knowsley Road from the church. Before WW2 there was even a sweet

factory on the site now occupied by the flats opposite the butcher's. It was owned by a local resident named Sam Knight who travelled around the district in a pony and trap.

Another commodity which was vital in people's lives back then was coal. Domestic gas central heating was virtually unknown. Gas was only used for cooking, very occasionally fires and also lighting the streets. Coal fires were the order of the day and lighting a fire involved a careful ritual of rolled newspaper firelighters, kindling firewood and strategically placed lumps of coal. In Wilpshire the coal delivery business was in the hands of the Holgate brothers. They were members of a long established local family whose grandfather lived in the old farmhouse on Whalley Road called Lower Pythorne. The house is still there. It was he who built the terraced row of West View and also owned much land in the area. The coal business was conducted from the goods yard at the old Wilpshire Station (now Station Close) where weekly deliveries arrived by rail until the 1960's.

When asked how different life was in Wilpshire sixty or seventy years ago compared to today Peter reflected that there was more community spirit and more sociability. Perhaps people had more time or there was less to do. People often chatted at their front gates, supported one another and knew everybody. Bonfire Night was a big community occasion with a large bonfire on land off Whalley Road near Lower Pythorne to which the neighbourhood brought treacle toffee and parkin. At Christmas people visited each other's homes to have a drink and chat. Peter recalled the Queen's Coronation in 1953 when many people crowded into the home of Mr. & Mrs. Riding on the corner of Whalley Road and Somerset Avenue to watch the event as their's was one of the only houses with a television.

A focal point of Wilpshire's community life was The Wilpshire Hotel. Entertainment was provided on Saturday and Sunday evenings and people would journey out from Blackburn to enjoy it before returning on the last bus. A highlight of the early 1960's was Wednesday nights when Blackburn's own popstars – 'The Four Pennies' – practised in the pub's concert room. The pub was packed on these occasions. Back then there were often drunken brawls and the pub had a certain reputation as witnessed by Peter who often served behind the bar.

So, a glimpse of days gone by in Wilpshire. Much has changed as the years have passed and will, no doubt, continue to change. Our thanks go to Peter for sharing his memories of a lifetime. If there are other residents who would like to share their memories of life in Wilpshire then please contact us.



Wilpshire in Times Past



## Walking Wilpshire

Wilpshire and surrounding parishes have an excellent and comprehensive network of public footpaths, ginnels, tracks and bridleways which repay those who use them with some wonderful views, interesting landscapes and varied terrain. Above all, they offer the possibility to enjoy healthy exercise and fresh air without costing a penny.

The local footpath network can be easily accessed from all parts of Wilpshire and routes can be followed to suit all abilities and levels of fitness from a stroll or to gain access to a long distance track. Indeed, the long distance Wainwright's Way, celebrating the late Alfred Wainwright's life and linking Blackburn to the Lake District by public footpaths, passes through the area at Dean Clough. And, every resident of Wilpshire can boast that they can leave their front door and walk all the way to Scotland without ever passing through a large town. Now there's a challenge!

In order to encourage residents to use our local footpath network the Parish Council is developing a series of local walks of varying length and difficulty. These will be published in this Newsletter and on our website at: [wilpshireparishcouncil.org.uk](http://wilpshireparishcouncil.org.uk) over the coming years. Details of the first two are on the following pages. All routes will follow public rights of way though the Parish Council cannot accept responsibility for changes which take place after publication. Route descriptions are as accurate as possible and have been checked but those using them do so at their own risk. The Ordnance Survey Explorer Map No 287 West Pennine Moors all public rights of way in our area in great detail and may be of additional assistance in route finding.

Do get out and use our local public footpath network and enjoy Wilpshire's countryside.



Walkers crossing Wilpshire Golf Course

## Wilpshire Walk 1

## Across Wilpshire Moor

**Distance:** 3.5 miles moderately easy

**Starting Point:** Wilpshire Methodist Church

**Terrain:** Hard surfaces, pavement, fieldpaths, road

***This walk leads you out of the built up area and on to the ridge of Wilpshire Moor with lots to see along the way***

**Route:** Walk down Ribchester Road towards Salesbury. **TURN RIGHT** into Somerset Avenue and walk to the end where it joins Whalley Road. **TURN LEFT** on to Whalley Road towards Whalley. Walk down Whalley Road as far as the entrance to Carr Hall (MMD). **CROSS WHALLEY ROAD** and pass through the small metal gate set in the wall to the left of the main entrance. Follow the left hand side pavement up the driveway of Carr Hall. Follow the footpath markers through the grounds of Carr Hall. You will cross a footbridge and eventually come to a gate into a field.

*(The modern Carr Hall sits on the site of its ancient predecessor which was a yeoman's farmhouse originally linked to the Talbot Family. The modern office block is home to offices of MMD, a large company engaged in planning utility projects)*

Climb up a bank ahead of you to the right of a fence, not between the fences, and through some saplings. Eventually, the path bears right and follows a fence towards Little Snodworth Farm whose floodlit paddock with caravans you will see ahead. Upon reaching the farmyard walk to the drystone wall ahead with a concrete and asbestos farm building with a curved roof. To the left of this building is a stile in the form of a low, vertical stone slab.

Climb over the stile and follow the public footpath the surface of which Wilpshire Parish Council has improved in recent years. You will come to a stile. Climb it and continue straight ahead across boggy ground to another stile. Climb it and keep straight ahead following the remains of a track. When this peters out you will see another stile ahead. Climb it and go straight ahead but after 50 metres begin to **BEAR LEFT** up the shoulder of a hill but don't go to the top of it. Ahead you will see trees and eventually a wall marking the boundary of the golf course.

*(This part of the route from Little Snodworth to Hollowhead Lane is very scenic with distant views up Ribblesdale to Pendle Hill, Clitheroe, the fells of the Yorkshire Dales and Bowland and out to Preston and the coast with Blackpool Tower on the horizon)*

On reaching the golf course wall you will find a stile across it together with a noticeboard. Climb the stile and you will find a well-placed bench on which to sit and admire the distant views to the Fylde Coast and Longridge Fell. This bench was provided by Wilpshire Parish Council in 2010 and is made from recycled plastic bags.

*(Wilpshire Golf Course was established in 1890 and the present course was designed by James Braid a renowned golf course architect. He made excellent use of the natural features of Wilpshire Moor)*

**Continue straight ahead following the black & white marker posts.** You will cross a fairway, keeping **RIGHT** of a green ahead with a flag and beyond it keep to the **RIGHT** of a plantation of Scots Pine trees. Keep following the black & white markers which lead you to the **LEFT** of the next Scots Pine plantation and keep to the edge of the fairway leading downhill. Head to the **RIGHT** of the stone footbridge (do not cross it) then walk in the rough grass of another fairway towards the houses on Hollowhead Lane. (Look out for golfers teeing off ahead and flying golf balls)

**Ahead** you will eventually see, to the left of a tee, a stile in a wall leading on to Hollowhead Lane. **TURN RIGHT** and walk down the Lane to the traffic lights and follow Ribchester Road back to your starting point.

## Wilpshire Walk 2

## Through Wilpshire's Back Door

**Distance: 2 miles easy**

**Starting Point: Wilpshire Methodist Church**

**Terrain: pavement, rough track, fieldpaths**

***This short walk takes you along paths between gardens, along hidden ways as well as a brief foray into open countryside on the bridleway through Tippings Farm.***

**Route:** Head down Ribchester Road towards Salesbury as far as the last house in Wilpshire on the right hand side of the road with the boundary sign outside. **TURN RIGHT** on to a track leading to Salesbury Cricket Club.

*(Salesbury Cricket Club was founded in 1906 and originally played in the Blackburn Sunday School League. Today, this flourishing club has three senior sides in the Ribblesdale League. The view from the ground must rank as one of the most beautiful in Britain)*

Just before the clubhouse **TURN RIGHT** into a ginnel leading to The Hazels housing estate. At the other end of the ginnel **GO STRAIGHT AHEAD** through the estate then **BEAR LEFT** where the street branches and follow another ginnel/path passing a large detached house on your left. You will reach Vicarage Lane at the other end. **TURN LEFT** on to Vicarage Lane and head downhill. The Lane bends right and crosses a bridge over the railway.

*(The Ribble Valley Line opened to Clitheroe in 1846 and to Chatburn in 1850. When the Settle-Carlisle Line opened in 1875 the Lancashire & Yorkshire Railway decided to extend the Line to Hellifield and make a junction there. The extension opened in 1880. The L&Y and Midland Railway operated joint express trains to Scotland from Manchester using this route. The Line closed to passengers in 1962 and survived as a diversionary route for the West Coast Main Line. After a public campaign, a regular passenger service to/from Clitheroe was reintroduced in 1994 with a Sunday service to Hellifield. The Line is also part of the Strategic Freight Network. All told, a lucky survivor.)*

Immediately over the bridge is a house on the left- Wilpshire Lane Farm. **GO THROUGH** the ornamental metal gate. **PASS IN FRONT OF THE HOUSE TO A WOODEN GATE AHEAD. GO THROUGH** the gate and follow the lane with a stile/gate to Tippings Farm. Continue along the lane towards the houses on Lyndale Avenue.

**TURN LEFT** on to Lyndale Avenue and **CROSS IT**. Between number 5&7 Lyndale Avenue **TURN RIGHT** up a back lane which leads to Whalley Road. At Whalley Road **TURN RIGHT** and walk along it to Durham Drive (2nd turning on the right).

*(You will pass the imposing building once known as Wilpshire Orphanage. It was opened in 1891 after five years of fundraising and was the inspiration of James Dixon. It provided a home for destitute children aged 4 to 12 years. Priority was given to children without both parents. Another block was added in 1904 so that boys and girls could be housed separately. The Orphanage was later renamed The Homestead and the original building was demolished by the 1970's. Today it is the headquarters of the charity founded by James Dixon but now known as Child Action North West which continues to support local children and young people in need.)*

**TURN RIGHT** down Durham Avenue walking on the **LEFT** side pavement. After passing the second house – No3 – **TURN LEFT** into a public footpath (signed and gated) and follow it to cross over the railway above the entrance to Wilpshire Tunnel (297metres). Immediately over the Tunnel a footpath goes left. **TURN LEFT** on to this footpath which leads to Somerset Avenue. At Somerset Avenue **TURN RIGHT** and walk along to Ribchester Road. At Ribchester Road **TURN LEFT** towards Wilpshire Methodist Church.

